

Powering Possibilities In Port Hope

Exploring the Potential for ***New Nuclear Generation***



Powering
Possibilities

Ontario's Electricity System

Ontario 

 **ieso**
Independent Electricity
System Operator

 **ONTARIO
ENERGY
BOARD**

**ONTARIO POWER
GENERATION**

 **hydro
one**

01 Ministry of Energy (Ontario)

- Sets provincial energy policies and priorities.

02 Independent Electricity System Operator (IESO)

- Manages and forecasts Ontario's electricity system

03 Ontario Energy Board (OEB)

- Sets electricity rates and enforces compliance with regulations.

04 Utilities - Ontario Power Generation (OPG)

- Electricity generators, private or public, including OPG.

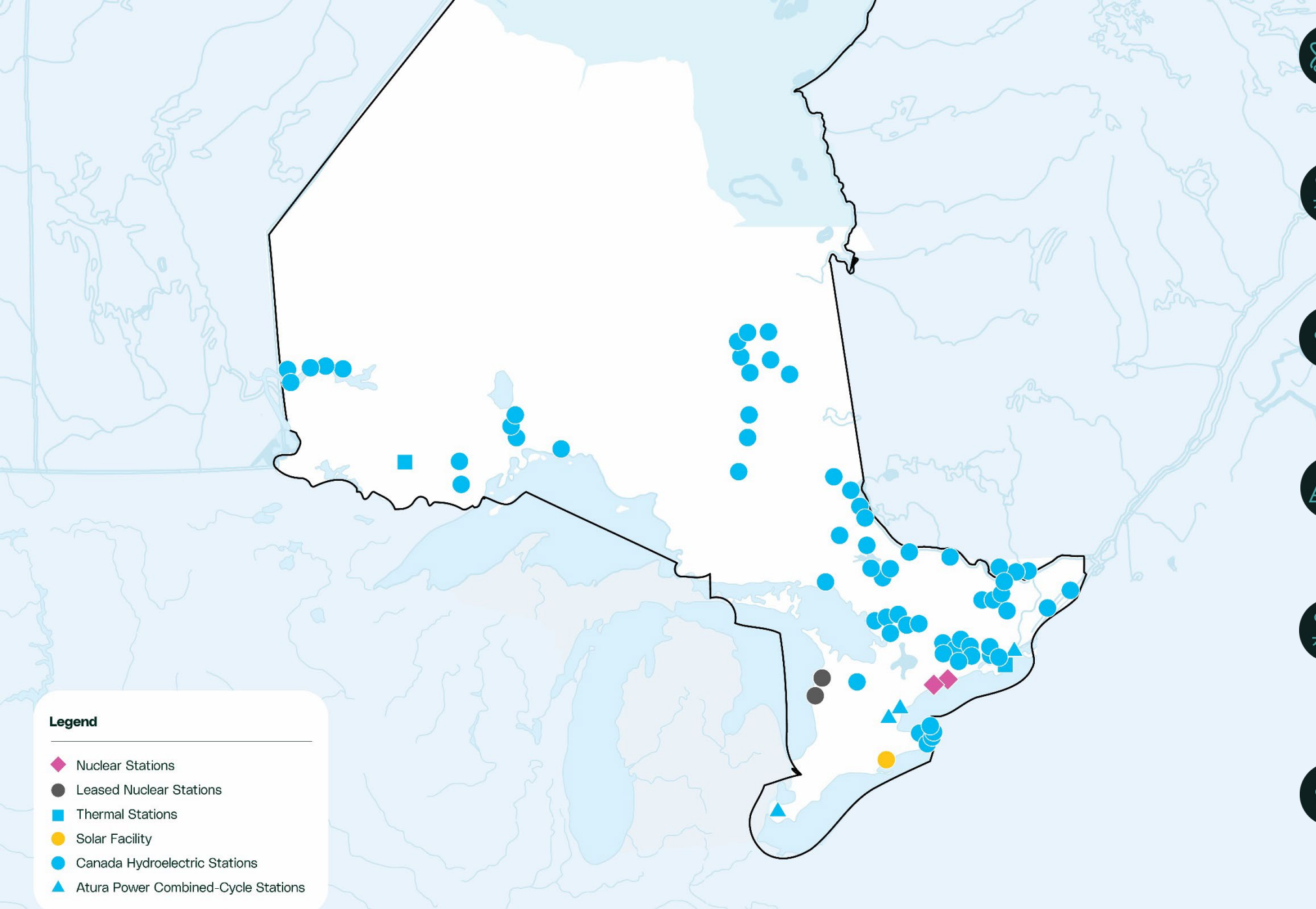
05 Hydro One & Local Distribution Companies (LDCs)

- Manage transmission lines and distribute power.



**Ontario
Consumers:**

- Homes
- Schools
- Hospitals
- Businesses



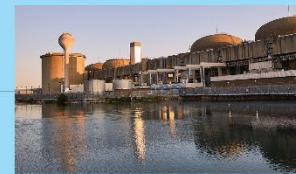
Legend

- ◆ Nuclear Stations
- Leased Nuclear Stations
- Thermal Stations
- Solar Facility
- Canada Hydroelectric Stations
- ▲ Atura Power Combined-Cycle Stations



2

Nuclear
Generating Stations



66

Hydroelectric
Generating Stations
in Canada



2

Thermal
Stations



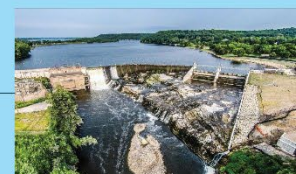
1

Solar
Facility



85

Hydroelectric
Generating Stations
in the U.S.



4

Atura Power
Combined-Cycle
Generating Stations



Enabling Ontario's *affordable energy future*

Nuclear generation at Wesleyville is needed to meet the growing demand for electricity.

As Ontario's economy, demand for clean electricity and the importance of energy security grows, so too does the need to explore the site's potential to host new large nuclear generation.

Ontario has prioritized energy affordability and reliability as the foundation for sustainable growth and prosperity.

This requires an “all-of-the-above” approach, including:

- Proceeding with a significant generation build-out, including competitive procurements, refurbishments, hydroelectric development, as well as exploring new nuclear

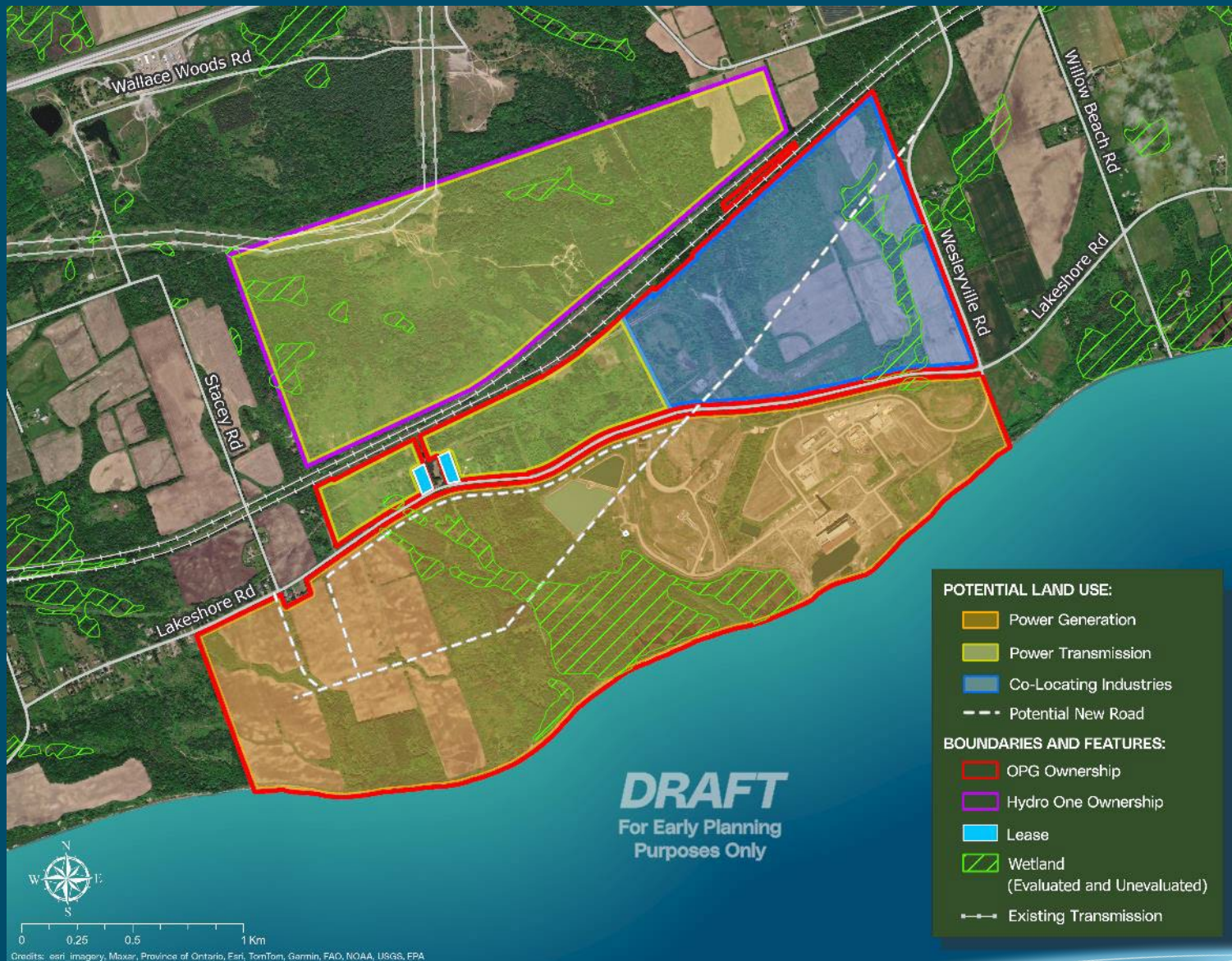


Why *Wesleyville?*

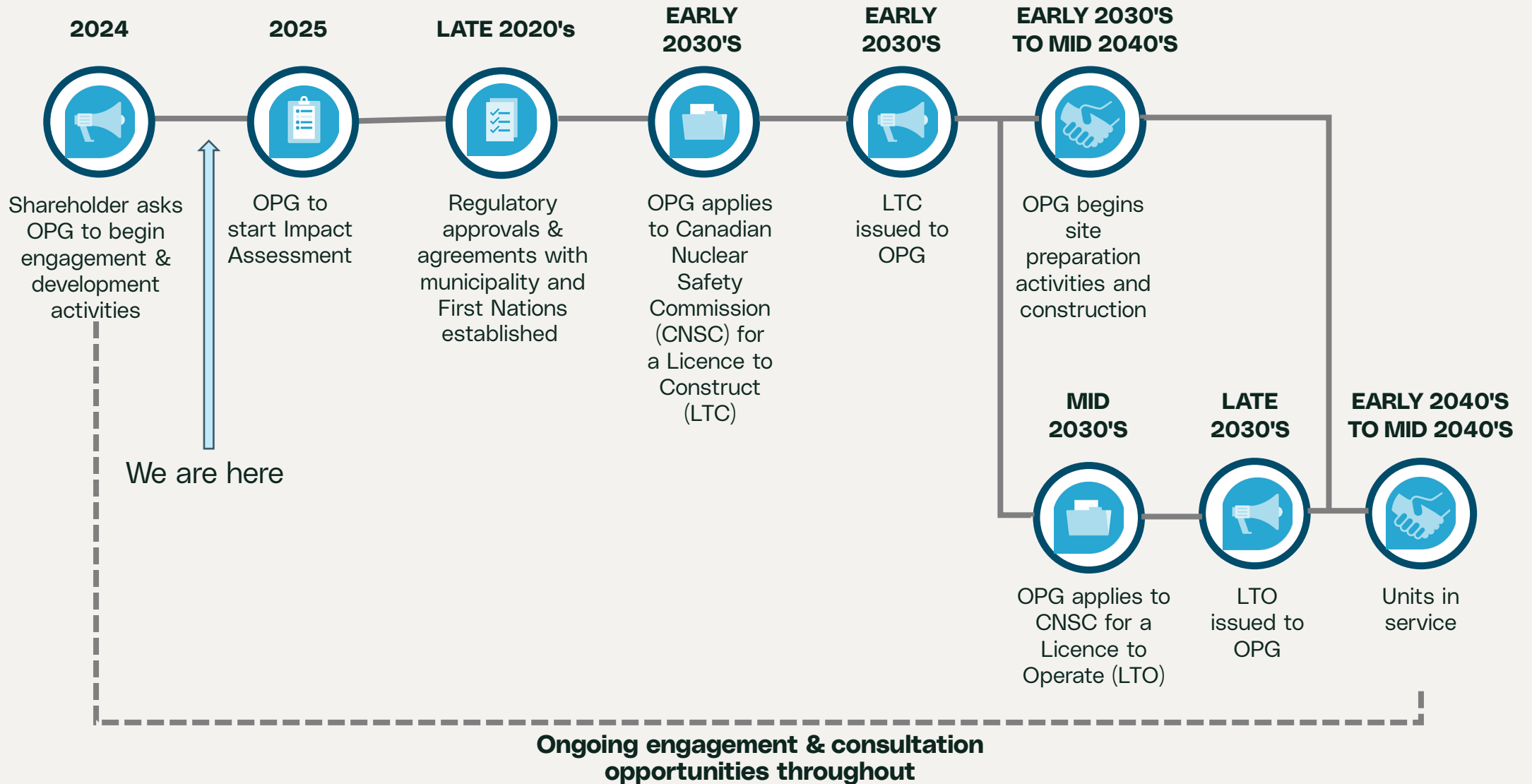
The **1,300-acre** Wesleyville site, which has been municipally-zoned and maintained for electricity generation for more than **50 years**, has many features that make it ideal for hosting a large nuclear development, including:

- Potential to co-locate other industries
- Existing access to transmission, railways and roads
- Sufficient exclusion zone and emergency planning considerations
- Located in the Durham-Northumberland clean energy corridor, which is also home to Pickering and Darlington Nuclear Generating Stations
- Has the potential to host up to **10,000 megawatts (MW) of nuclear** or enough to power the equivalent of **10 million homes**.

Wesleyville site *potential land use overview*



Potential *new nuclear roadmap*



**this potential timeline is subject to change based on project planning and regulatory approvals*

Public Engagement *Summary*

Since **April 2025** OPG has engaged with more than **1,200** people in Port Hope and surrounding communities.

Community Information

Booths:

- Float Your Fanny
- Recreation centers (skates and swims)

Engagement with:

- Community members
- Port Hope Council
- Port Hope Chamber of Commerce
- Friends of Wesleyville
- Willow Bech Field Naturalists
- Ganaraska Region Conservation Authority
- Northumberland Land Trust

Initial round of public information sessions:

- 100+ attendees

Print and communications:

- Mass mailer to all postal codes in Port Hope
- Introductory conversations with near-site neighbours
- Stakeholder emails and letters
- 20% increase in traffic to opg.com/wesleyville
- Digital and roadside advertising



Economic *Benefits*

According to the Conference Board of Canada, the key **potential benefits** of a large nuclear generation project to Port Hope over the project's life (95 years):

- \$65.7 billion boost to GDP and \$10.5 million in municipal tax revenues annually.
- Locally, approx. **1,700 jobs** during the design and construction phase and **1,600** during the operation and maintenance phase, an average 15 to 20 per cent boost to overall employment levels.
- **Communities in these areas could also benefit from:**
 - Supply chain spending
 - Direct and indirect spending by employees working and living in the region
 - Corporate and employee charitable giving
 - Environmental initiatives including potential biodiversity protection initiatives.



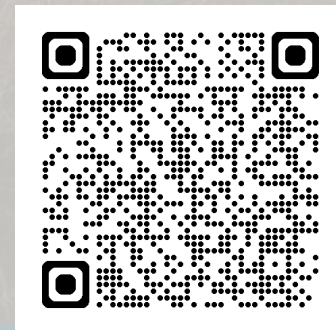
What's next?

- **Continued public engagement opportunities**
 - Port Hope Nuclear Information Centre (115 Toronto Road) planned for June/July opening
 - Community events throughout the summer and fall
- **Memorandum Of Understanding between Municipality and OPG**
- **Early site work and studies**
- **Filing of an Initial Project description**

For more information/to discuss further:

Call us: 1-800-461-0034

Visit our website: opg.com/wesleyville





Questions?

OPG

Powering
Possibilities