

Powering Possibilities In Port Hope

Exploring the Potential for ***New Nuclear Generation***



OPG

Powering
Possibilities

Ontario's Electricity System

Ontario 

 **ieso**
Independent Electricity
System Operator

 **ONTARIO
ENERGY
BOARD**

**ONTARIO POWER
GENERATION**

 **hydro
one**

01 Ministry of Energy (Ontario)

- Sets provincial energy policies and priorities.

02 Independent Electricity System Operator (IESO)

- Manages and forecasts Ontario's electricity system

03 Ontario Energy Board (OEB)

- Sets electricity rates and enforces compliance with regulations.

04 Utilities - Ontario Power Generation (OPG)

- Electricity generators, private or public, including OPG.

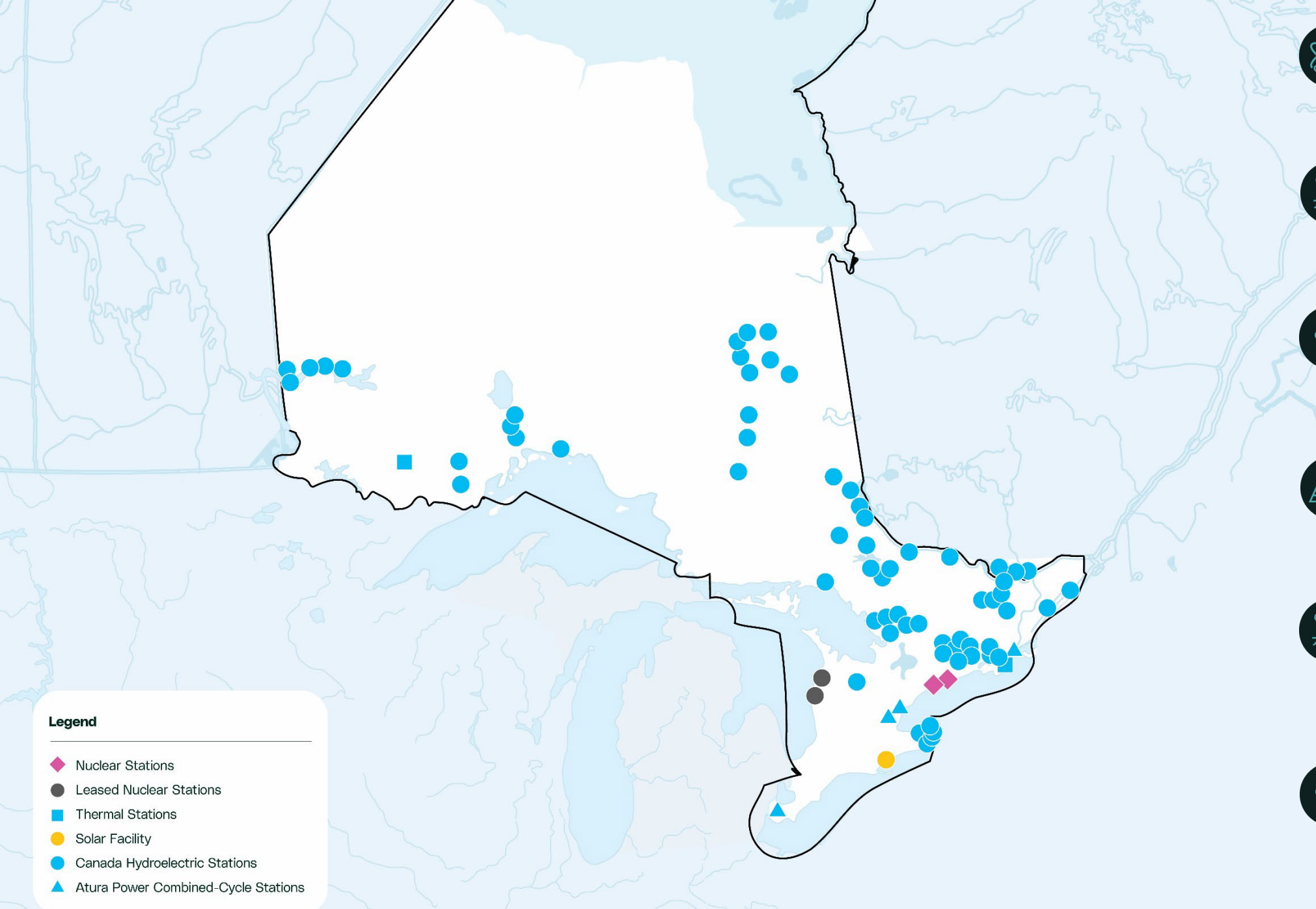
05 Hydro One & Local Distribution Companies (LDCs)

- Manage transmission lines and distribute power.



**Ontario
Consumers:**

- Homes
- Schools
- Hospitals
- Businesses



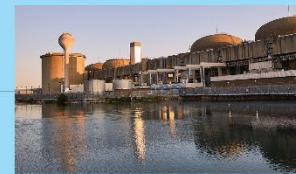
Legend

- ◆ Nuclear Stations
- Leased Nuclear Stations
- Thermal Stations
- Solar Facility
- Canada Hydroelectric Stations
- ▲ Atura Power Combined-Cycle Stations



2

Nuclear
Generating Stations



66

Hydroelectric
Generating Stations
in Canada



2

Thermal
Stations



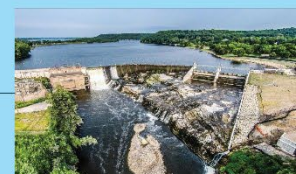
1

Solar
Facility



85

Hydroelectric
Generating Stations
in the U.S.



4

Atura Power
Combined-Cycle
Generating Stations

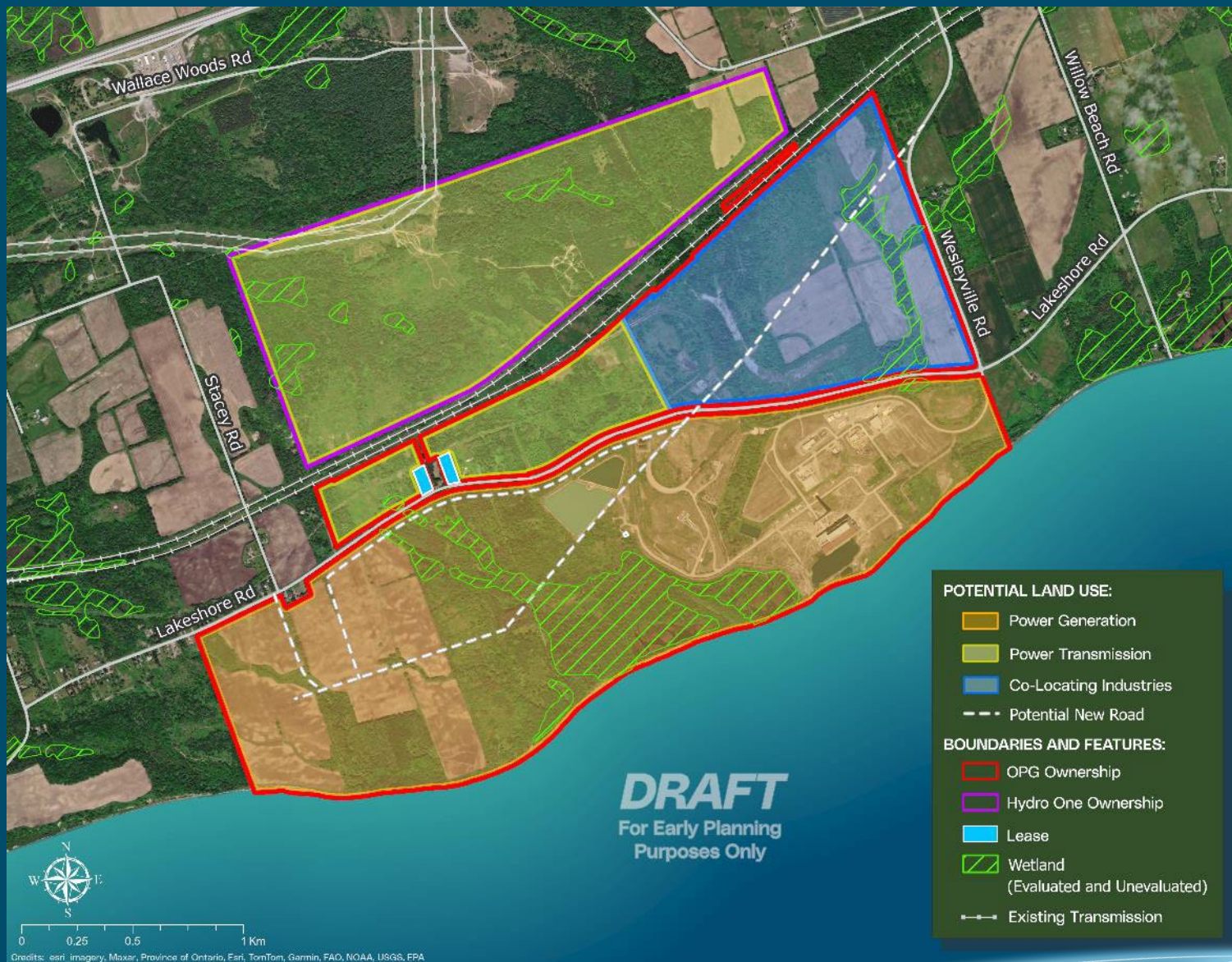


Why *Wesleyville?*

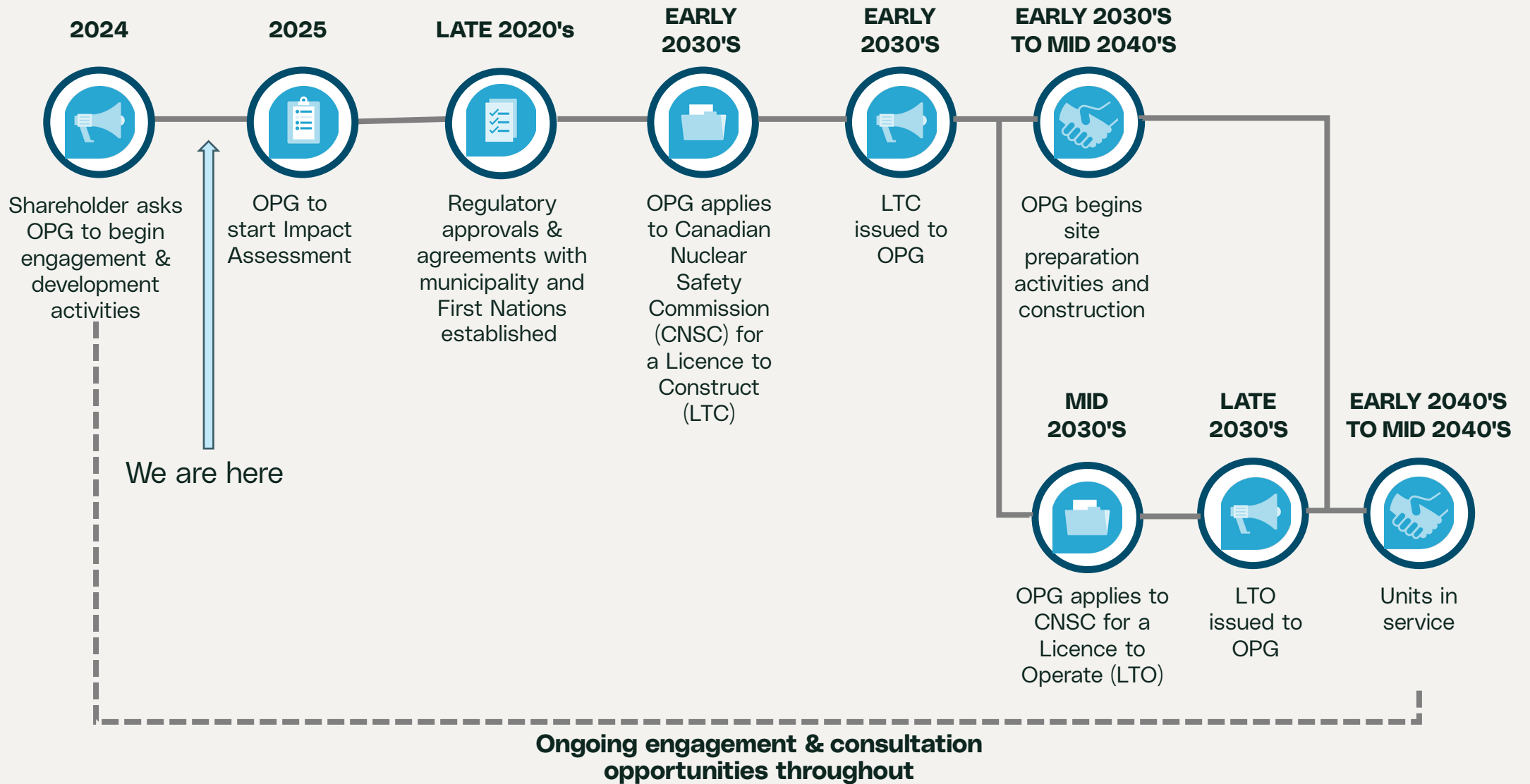
The **1,300-acre** Wesleyville site, which has been municipally-zoned and maintained for electricity generation for more than **50 years**, has many features that make it ideal for hosting a large nuclear development, including:

- Potential to co-locate other industries
- Existing access to transmission, railways and roads
- Sufficient exclusion zone and emergency planning considerations
- Located in the Durham-Northumberland clean energy corridor, which is also home to Pickering and Darlington Nuclear Generating Stations
- Has the potential to host up to **10,000 megawatts (MW) of nuclear** or enough to power the equivalent of **10 million homes**.

Wesleyville site *potential land use overview*



Potential *new nuclear roadmap*



**this potential timeline is subject to change based on project planning and regulatory approvals*

Economic *Benefits*

Key potential benefits of a large nuclear generation project over the project's life (95 years), according to the Conference Board of Canada:

- \$65.7 billion boost to the local GDP
- An average 15 to 20 per cent boost to overall local employment levels.
- \$235.5 billion contributed to Ontario's GDP.
- **Communities in these areas could also benefit from:**
- Supply chain spending
- Direct and indirect spending by employees working and living in the region
- Corporate and employee charitable giving
- Environmental initiatives including potential biodiversity protection initiatives.



Public Engagement *Summary*

Since **April 2025** OPG has engaged with thousands of people in Port Hope and surrounding communities.

Information Booths:

- Float Your Fanny.
- Northumberland Scottish Festival and Highland Games.
- Port Hope Arts Festival.
- Port Hope Fall Fair.
- Recreation centers (skates and swims).
- Ontario East Municipal Conference

Ongoing Engagement:

- Port Hope Nuclear Discovery Centre
- Continued conversations with near-site neighbours.
- Stakeholder emails and letters.
- Digital and roadside advertising.
- Facility tours.
- Regular updates to opg.com/wesleyville.

Engaging with:

- Community members & neighbours.
- Port Hope Mayor, CAO, council and staff.
- Port Hope Chamber of Commerce.
- Local provincial and federal elected representatives.
- Community groups.
- Conservation Authorities.
- Surrounding Municipalities.
- Local school boards.



Port Hope Council Tour



Port Hope Arts Festival



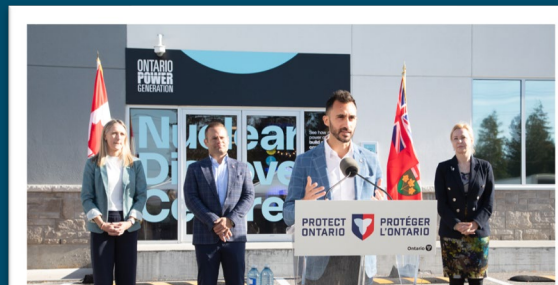
Port Hope Fair



Ontario East Municipal Conference



MP Philip Lawrence tour



Nuclear Discovery Centre Grand Opening

Examples of *What We've Heard*

Q: What types of nuclear technology are being considered, and what are their safety, efficiency and environmental impacts? What is the timeline for technology selection and implementation?

A: Over the next several years, detailed evaluations of a range of nuclear technologies will be conducted to select the most suitable technology using a criterion that includes safety, efficiency, environmental impact, and economics.



See a full list of frequently asked questions on our website.

Examples of *What We've Heard*

Q: Will there be an impact to surrounding properties or Lakeshore Road because of this project and how will the construction of new roads impact traffic patterns, noise levels, and local infrastructure?

A: Initial assessments conducted by OPG will include an assessment of traffic, including the current conditions and use of roads that could be affected by future project activities. This assessment will consider access routes, traffic flow conditions including expected traffic volumes and resulting impacts (ie: noise) for each phase of the potential project (e.g., construction, operation). Traffic count surveys of the local area will be included in those assessments and are expected to start this year. The information gathered in this early assessment stage will be analyzed, and mitigation strategies determined, as required, through the impact assessment process that will take place over the next several years.



See a full list of frequently asked questions on our website.

Examples of *What We've Heard*

Q: What job opportunities will be created by the project, and how can community members apply for positions?

A: According to the Conference Board of Canada's conceptual analysis, roughly 1,700 jobs will be supported during the design and construction phase and 1,600 during the operation and maintenance phase of the potential project; an average 15 to 20 per cent boost to overall local employment levels. Community members can apply for a variety of positions through our website, community office, and job fairs.



See a full list of frequently asked questions on our website.

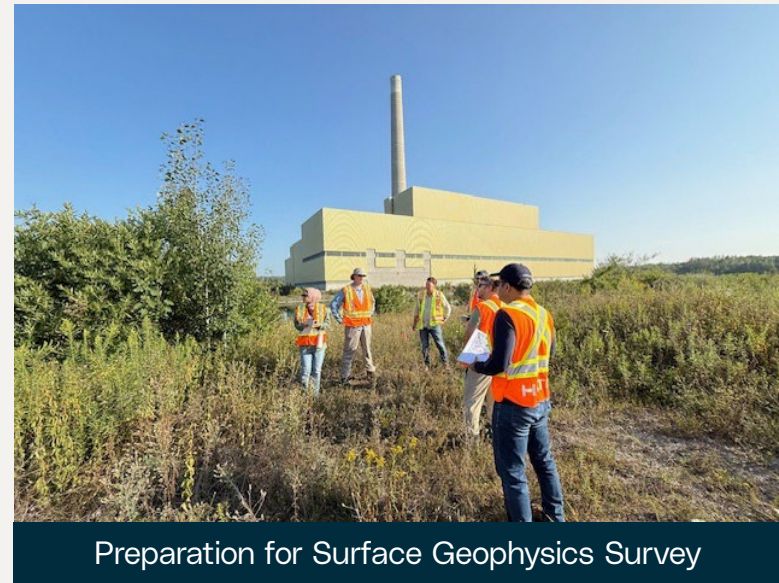
Next Steps

Submission of an Initial Project Description (IPD):

- IPD details the potential of hosting up to 10,000 megawatts of nuclear power generation at the Wesleyville site.
- Initiates a public review period.
- Based on the IPD and public comments, the Impact Assessment Agency of Canada considers the potential effects of the project.
- Initiates the Impact Assessment, which will study potential impacts.

Impact Assessment Field Programs are in progress, including:

- Aquatic Environment.
- Meteorological Environment.
- Cultural Heritage and Archaeology.
- Terrestrial Environment.
- Surface Water.
- Hydrogeological and Geological.
- Socio-economic.
- Traffic and Transportation.



Next Steps: Engagement

- Community events will continue throughout the winter and 2026.
- Information sessions with a focus on the Initial Project Description and Impact Assessment process
- Electrifying Education
- Sponsored swims and skates.



- Nuclear Discovery Centre at 115 Toronto Rd., Port Hope.
- Open Monday – Friday 9:00 a.m. – 3:30 p.m.



Questions?

OPG

Powering
Possibilities