

Neighbours

Little Long Dam Safety Project



A tower crane is used to support construction on the east side of the Adam Creek sluiceway structure, part of the Little Long Dam Safety (LLDS) project.

Construction Progress



The Little Long Dam Safety Project will see four new sluice gates added to the Adam Creek sluiceway structure, to increase discharge capacity in the event of large-scale flooding in the area. Construction is progressing, with some concrete work completed on the east bay area in mid-March, including two concrete base slab pours and one interior wall pour on the east side sluiceway area in April.

Much of the project work in early spring focused on preparations for the spring freshet (an increase in river flow due to melting snow and rain). As Adam Creek Sluiceway is essential to mitigate flows downstream, the area had to be cleared of all equipment and a temporary road was removed prior to freshet. Protective barriers were installed (including sandbags) on the east and west sides of the sluiceway structure to provide safe work zones when the sluiceway was being utilized during freshet. The efforts were effective in keeping work areas 'in the dry' and keeping workers safe.



This drone photo highlights the excavation of the plunge pool on the downstream side of the sluiceway structure.

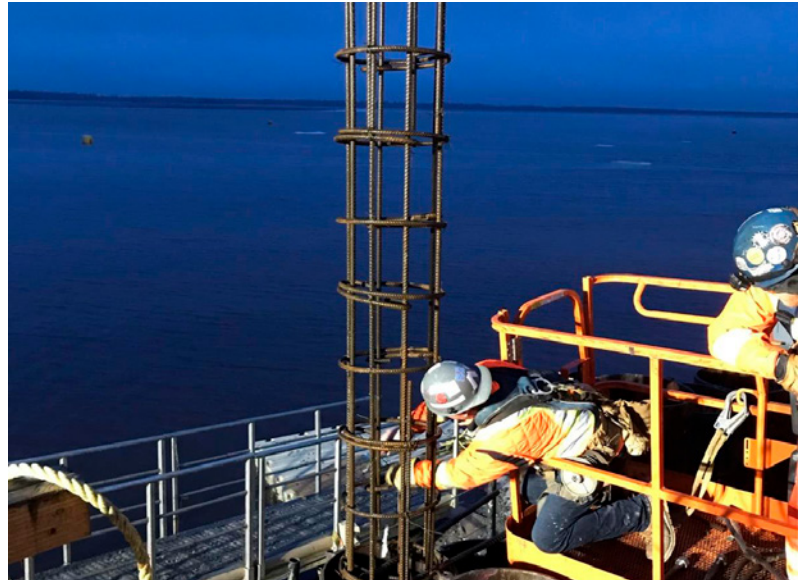


As the Adam Creek Sluiceway Structure is a spillway, it was required to mitigate high inflows due to spring freshet. In preparation, sandbags were placed to allow staff to maintain a safe work area when the spill was taking place.

Indigenous Employment & Engagement



As of April month-end, 31 employees working on the project have self-identified as Indigenous. The current estimate of contracts awarded to Indigenous businesses is \$32 million, with the total value awarded currently at \$30.65 million. OPG continues to engage with local Indigenous communities in a variety of ways, including monthly project update meetings, monthly written updates, and bi-weekly Indigenous employment opportunities sessions, to ensure communities are aware of current and future opportunities available.



An employee works to place a rebar cage in one of the cofferdam o-piles.

Pivoting to respond to second and third COVID-19 waves



For work taking place through the summer months, the project will see some overflow staff working at site. Originally, the extra staff was to be accommodated with lodging in Kapuskasing, however the increase in COVID-19 cases both provincially and in Northeastern Ontario required a change in plans. In March, the camp pad area was extended to accommodate the creation of more staff housing to support continued COVID-19 protocols for all staff, including the on-site rapid testing efforts. The expansion of the staff lodging quarters will be completed shortly. Other safety measures on site include temperature monitoring, daily screening, physical distancing measures, plexiglass barriers and PPE requirements.



Although drier than normal conditions led to lower than normal freshet flows, Adam Creek sluiceway structure remained essential in diverting water to protect assets downstream.



Neighbours

Little Long Dam Safety Project



For more information contact:

Kate Cantin
kate.cantin@opg.com

For Media Inquiries call:

1-877-592-4008
opg.com

ONTARIOPOWER
GENERATION

