

A photograph of a vast green field, likely corn, under a clear blue sky. The field is in the foreground and middle ground, with a line of trees in the distance. The sky is a uniform light blue. The image is split by a diagonal line from the top left to the bottom right, with the top-left portion being a dark grey overlay containing text.

»» NWMO – project update

April 15, 2025

Pickering – Community Advisory Committee

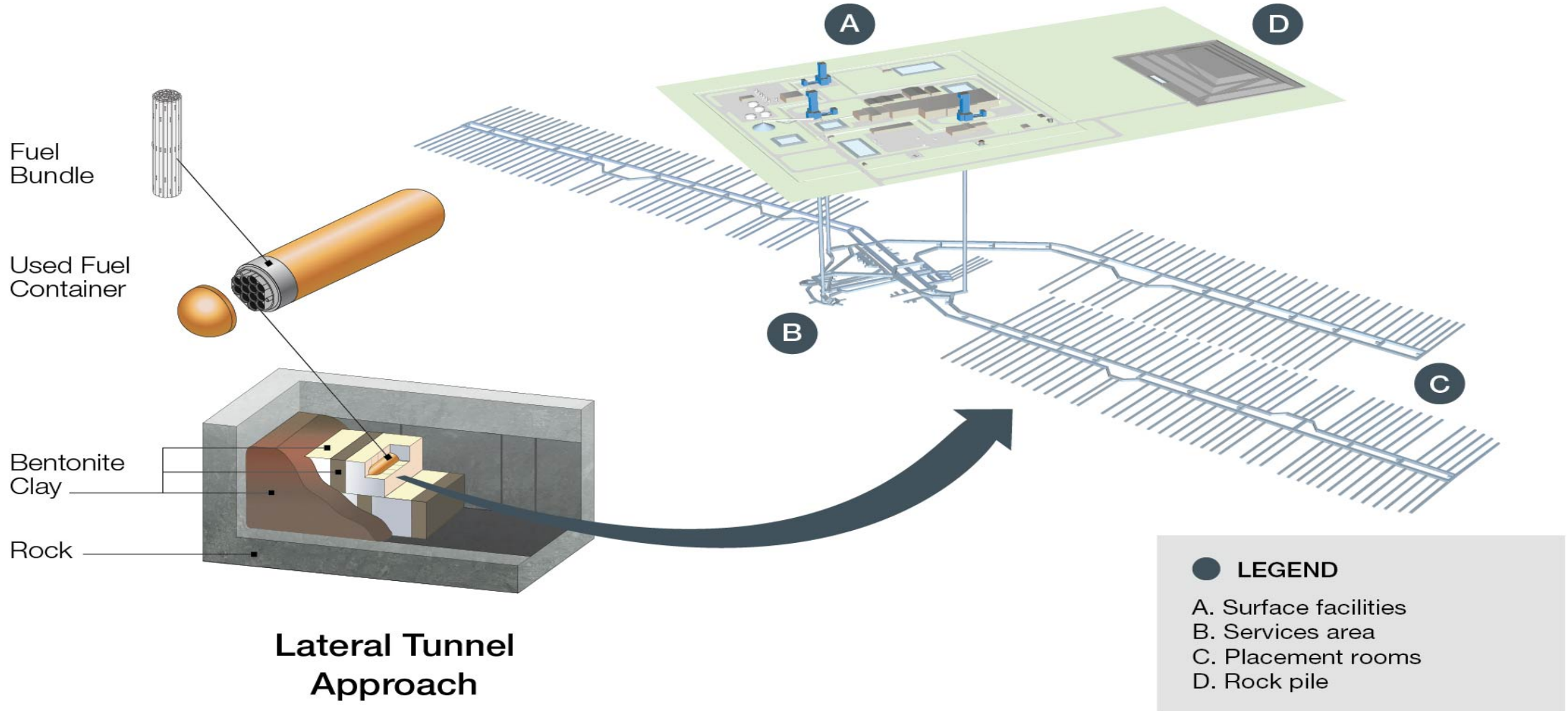
Joe Gaboury, Director Indigenous
Engagement

nwmo

NUCLEAR WASTE
MANAGEMENT
ORGANIZATION

SOCIÉTÉ DE GESTION
DES DÉCHETS
NUCLÉAIRES

Long-term management of used nuclear fuel





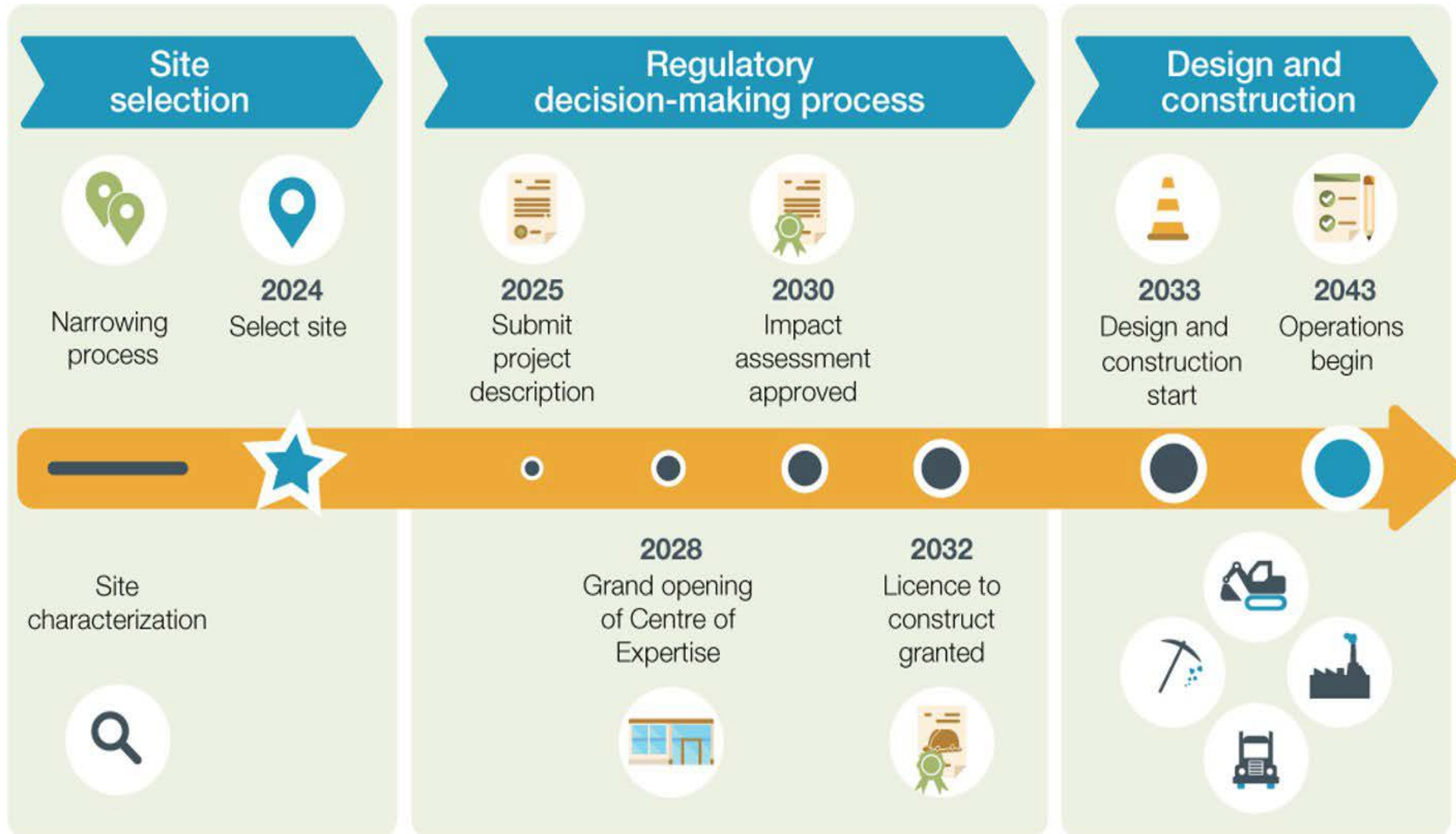
● **Interim storage facilities**

1. Whiteshell Laboratories
2. Bruce Nuclear Generating Station
3. Pickering Nuclear Generating Station
4. Darlington Nuclear Generating Station
5. Chalk River Laboratories
6. Gentilly Nuclear Generating Station
7. Point Lepreau Nuclear Generating Station

■ **Host communities for the selected site for the deep geological repository for used nuclear fuel**

Wabigoon Lake Ojibway Nation and the Township of Ignace

Project Timelines



SEPTEMBER 2022

Process used to Select Canada's Plan

Nuclear Fuel Waste Act (NFWA) – 2002

- Passed by Parliament to establish the NWMO
- Mandate: Recommend a safe, long-term approach for managing used nuclear fuel

Three-Year Study – 2002 to 2005

- Assessed management approaches
- Consulted Indigenous peoples, the public, and subject matter experts

Adaptive Phased Management (APM)



APM involves both a technical plan, and a phased and flexible implementation plan.

Preferred Approach: Adaptive Phased Management (APM)

- Recommended in 2005 and selected by the Government of Canada in 2007
- Technically sound, aligns with international best practices, and ensures long-term safety

Reconciliation Journey

- **NWMO Policies and Statements**

- Reconciliation Statement – 2018
- Reconciliation Policy – 2019
- Indigenous Knowledge Policy -2016, updated in 2020
- Water Statement - 2023

- **Reconciliation Commitments:**

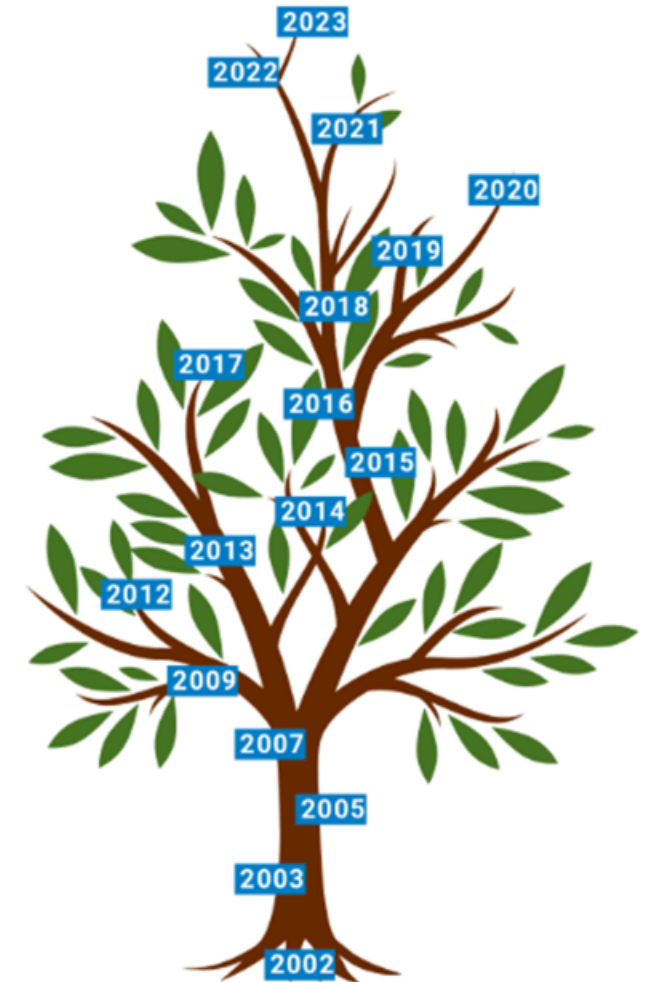
- Engage respectfully with Indigenous communities
- Provide cultural and Reconciliation training to staff
- Publish an annual Reconciliation plan

- **Guided by Elders and Youth**

- **Transparency:**

- Annual **Reconciliation Evaluation Report** published for progress updates

Our Reconciliation journey

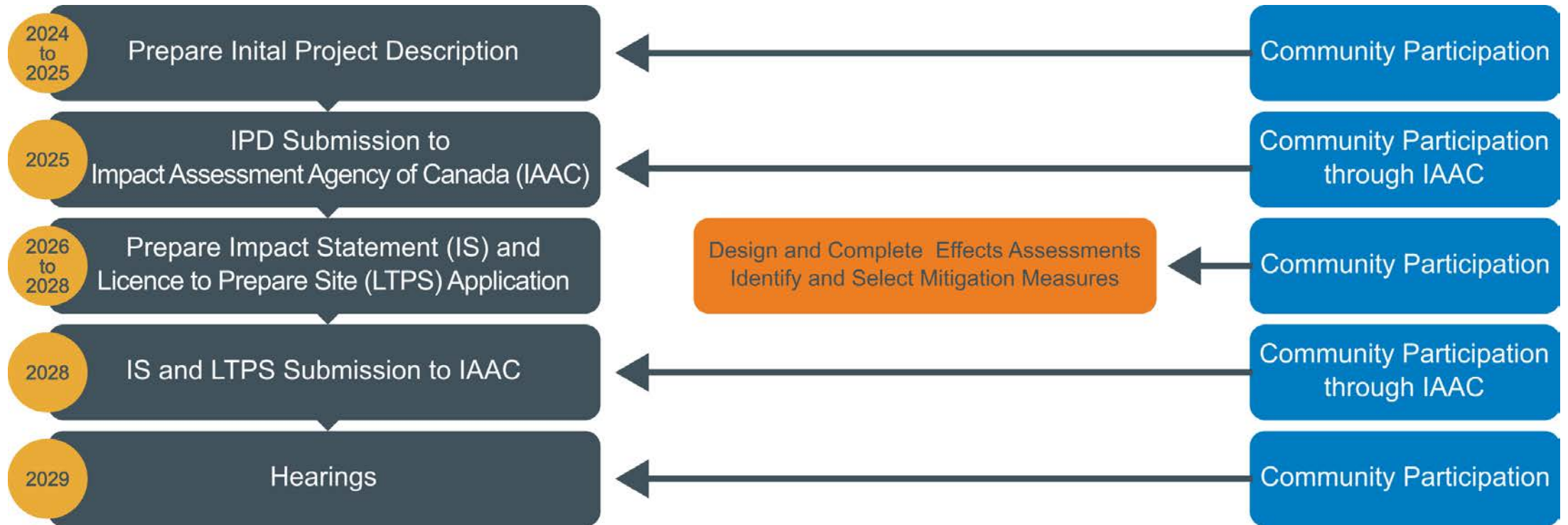


NWMO Site Selection Process for Canada's Used Fuel DGR Project

- Safety, transparency, and community engagement
- Evidence-based assessments
- Informed and willing hosts
- Fostering confidence
- Timeline & outcome:
 - **2010:** 22 communities volunteered into the process
 - **2024:** Wabigoon Lake Ojibway Nation (WLON) and the Township of Ignace selected
- The NWMO may now proceed to detailed site characterization and licensing



REGULATORY DECISION MAKING TIMELINES



How to Participate

nwmo

<https://www.cnsccsn.gc.ca/eng/waste/high-level-waste/cnsc-role-in-nwmo-apm-project/>

<https://iaac-aeic.gc.ca/050/evaluations/proj/88774>

nwmo

Project Schedule: Project Phases & Planning Timelines

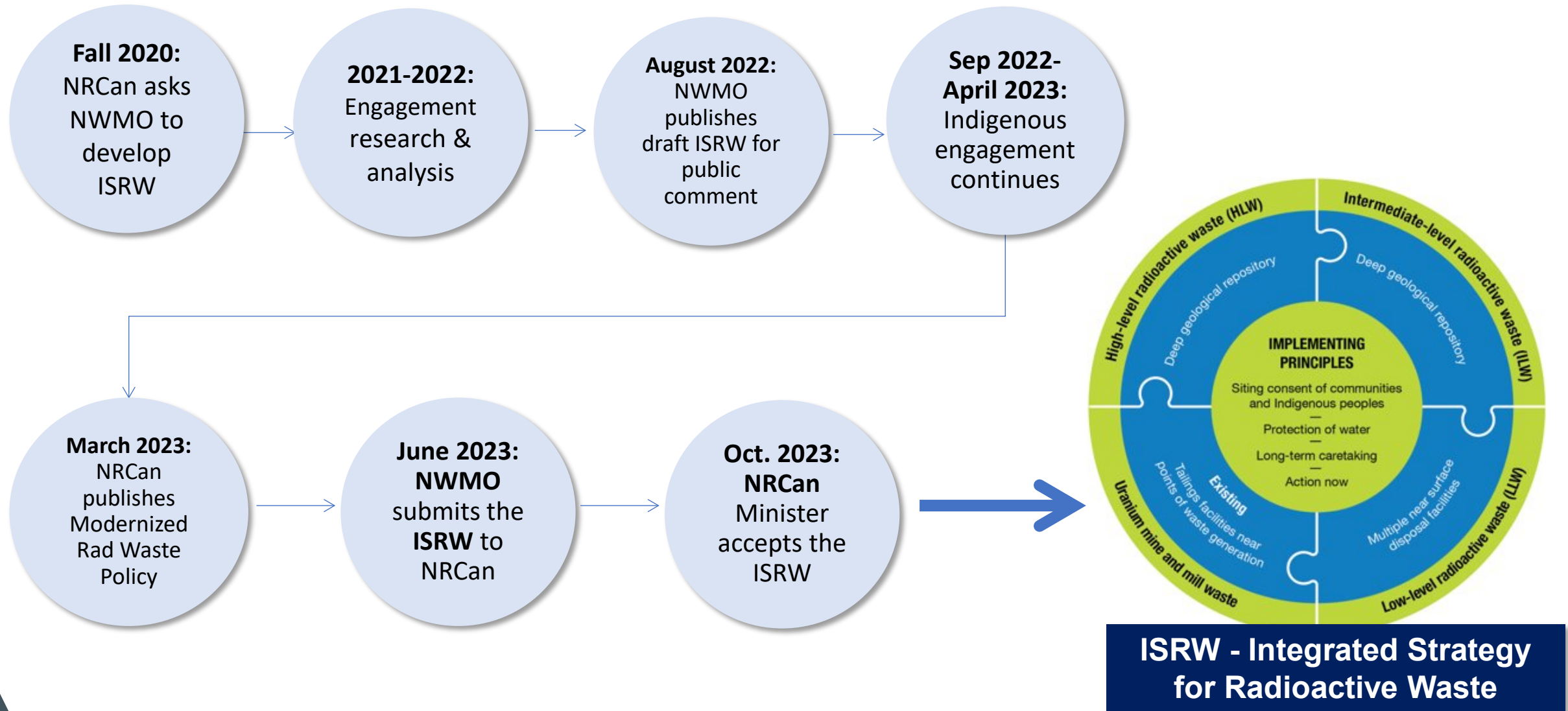
Project Phase	Approximate Timeline (Year)	Phase Duration (Years)
Site Preparation and Construction	2030-2042	13
CNSC Licence to Prepare Site Preparation - Activities	2030-2039	10
CNSC Licence to Construct - Activities	2033-2042	10
Operations	2043-2092	50
Decommissioning and Closure a. Extended Monitoring b. Decommissioning and Closure	2093-2192	100
Institutional Control¹	2193 +	

Notes:

1 The control of residual risks at a site after it has been decommissioned. Institutional controls can include active measures (those requiring activities on the site such as water treatment, monitoring, surveillance and maintenance) and passive measures (those not requiring activities on the site, such as land use restrictions or markers) (CNSC REGDOC-3.6, Glossary of CNSC Terminology).

Intermediate level and non-fuel high level waste

Where have we been?



Integrated Strategy for Radioactive Waste (ISRW) Recommendations

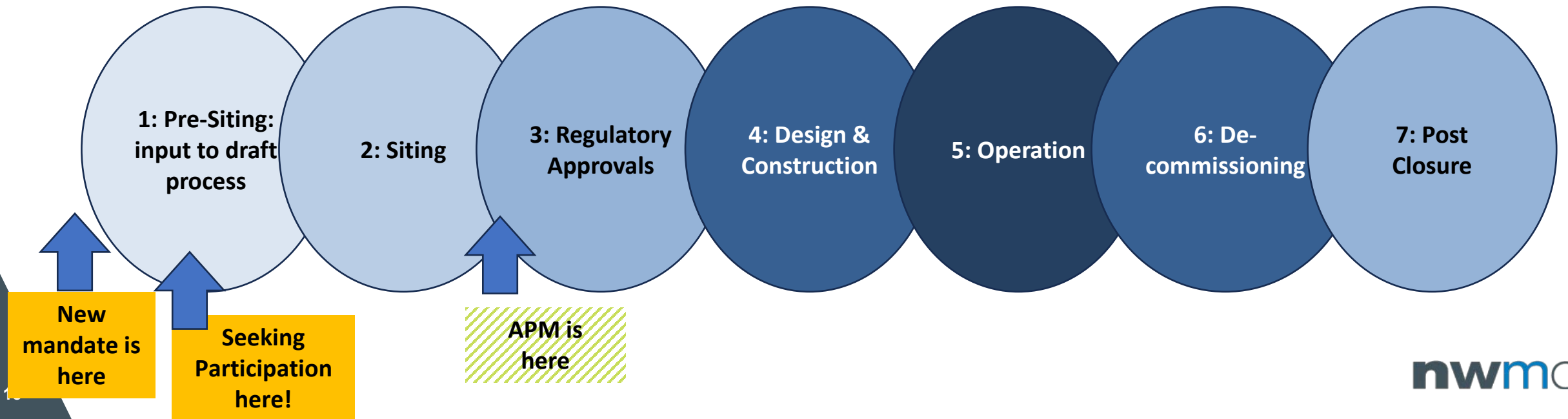
In October 2023, NRCan endorsed the following ISRW recommendations:

Recommendation 1	Intermediate-level waste & non-fuel high-level waste to be disposed of in a deep geological repository with implementation by the <u>NWMO</u>
Recommendation 2	Low-level waste to be disposed of in multiple near- surface disposal facilities with implementation <u>by waste generators (e.g., OPG)</u>



Where are we now & where are we going?

- Actively planning implementation of ISRW Recommendation #1
 - **Separate** from but **aligned** with NWMO work to implement a deep geological repository (APM) for used nuclear fuel
 - **Proposed Site Selection Process is** being drafted – To be engaged with rightsholders and the public in 2025
 - Building on **strength &** lessons learned through APM process





nwmo

Questions?

nwmo

Thank you

   @nwmocanada

 /company/nwmocanada

 www.nwmo.ca

