



2020 Pickering and Darlington Nuclear Groundwater Monitoring Program Results

CAC Update September 21, 2021

Speaker : Ali Esmaily



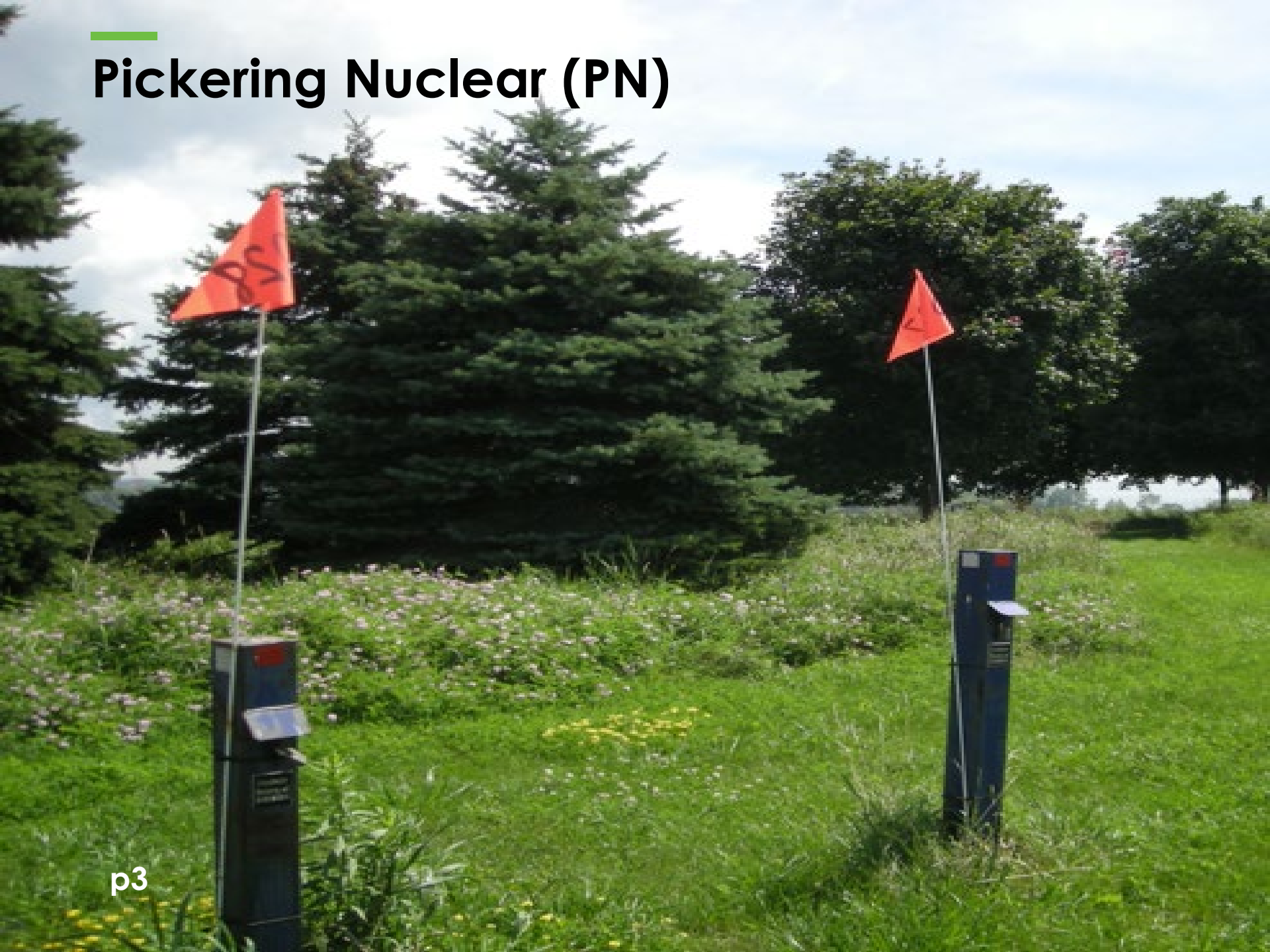
ONTARIO **POWER**
GENERATION

Annual Program Objectives

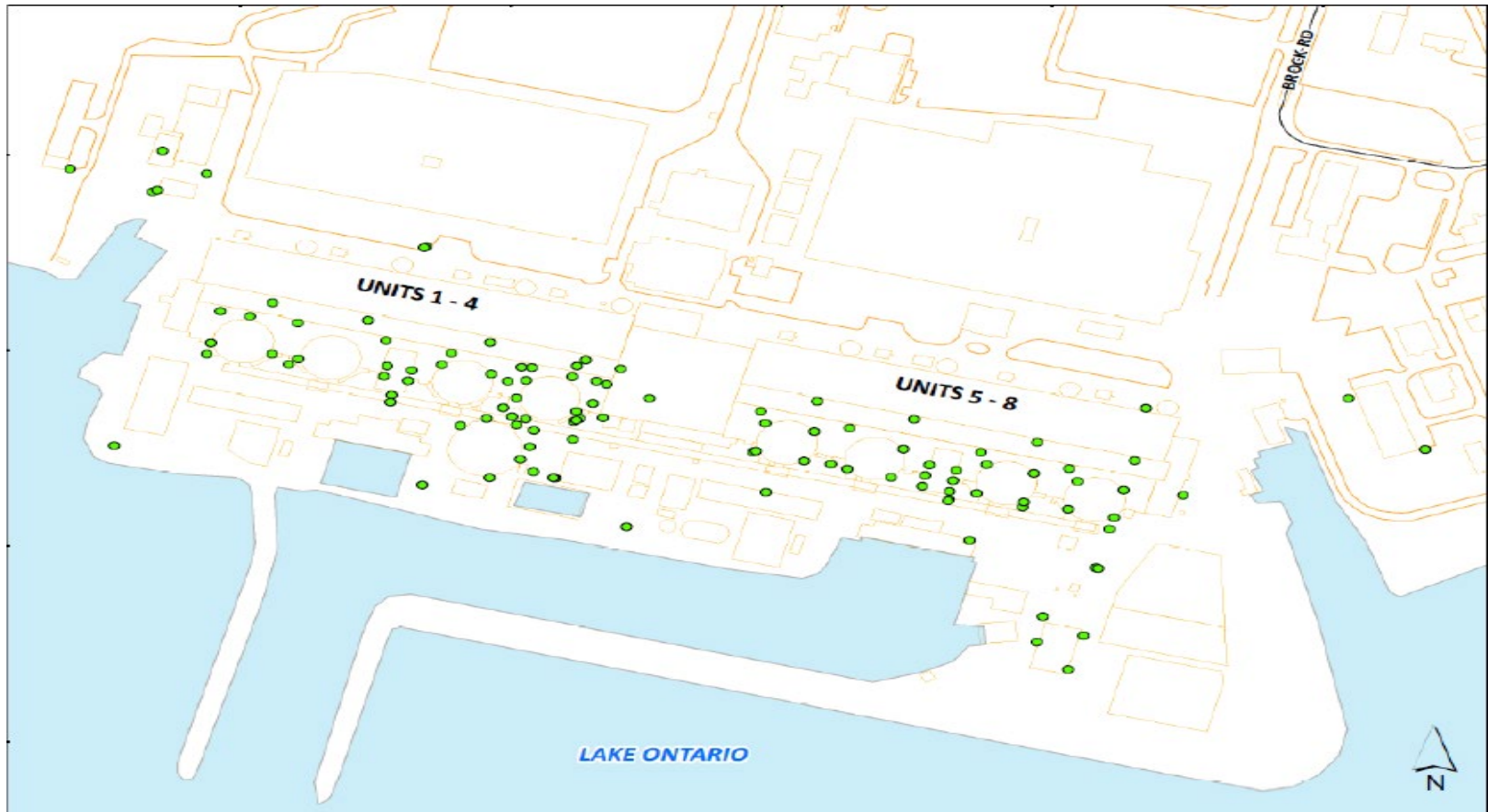
- Verify groundwater flow direction
- Monitor changes to on-site groundwater quality to identify new issues in a timely manner and assess historical issues
- Monitor groundwater quality at the site boundary to confirm there are no off-site impacts



Pickering Nuclear (PN)

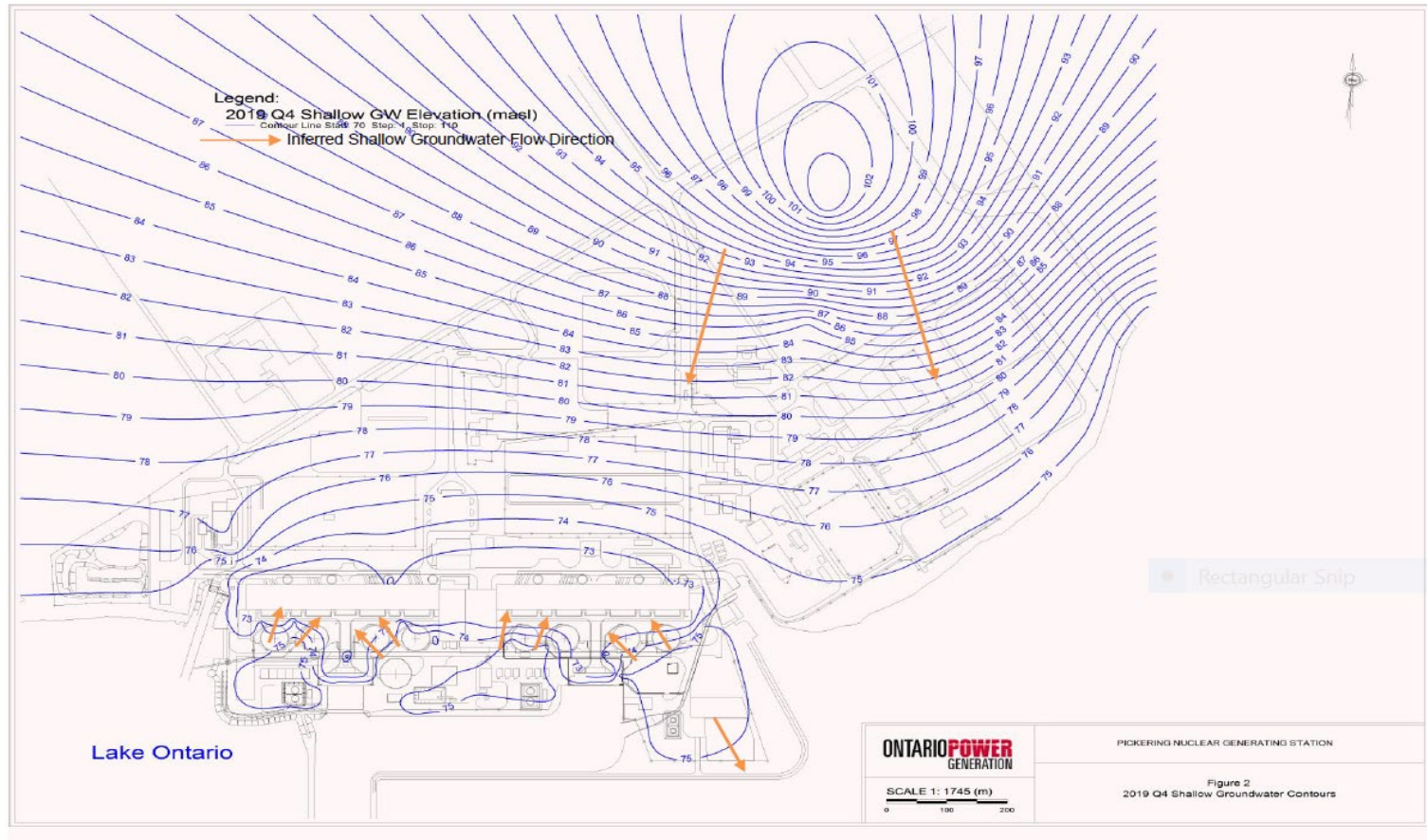


PN | Program Overview



- ✓ 104 sampling locations
- ✓ 244 samples

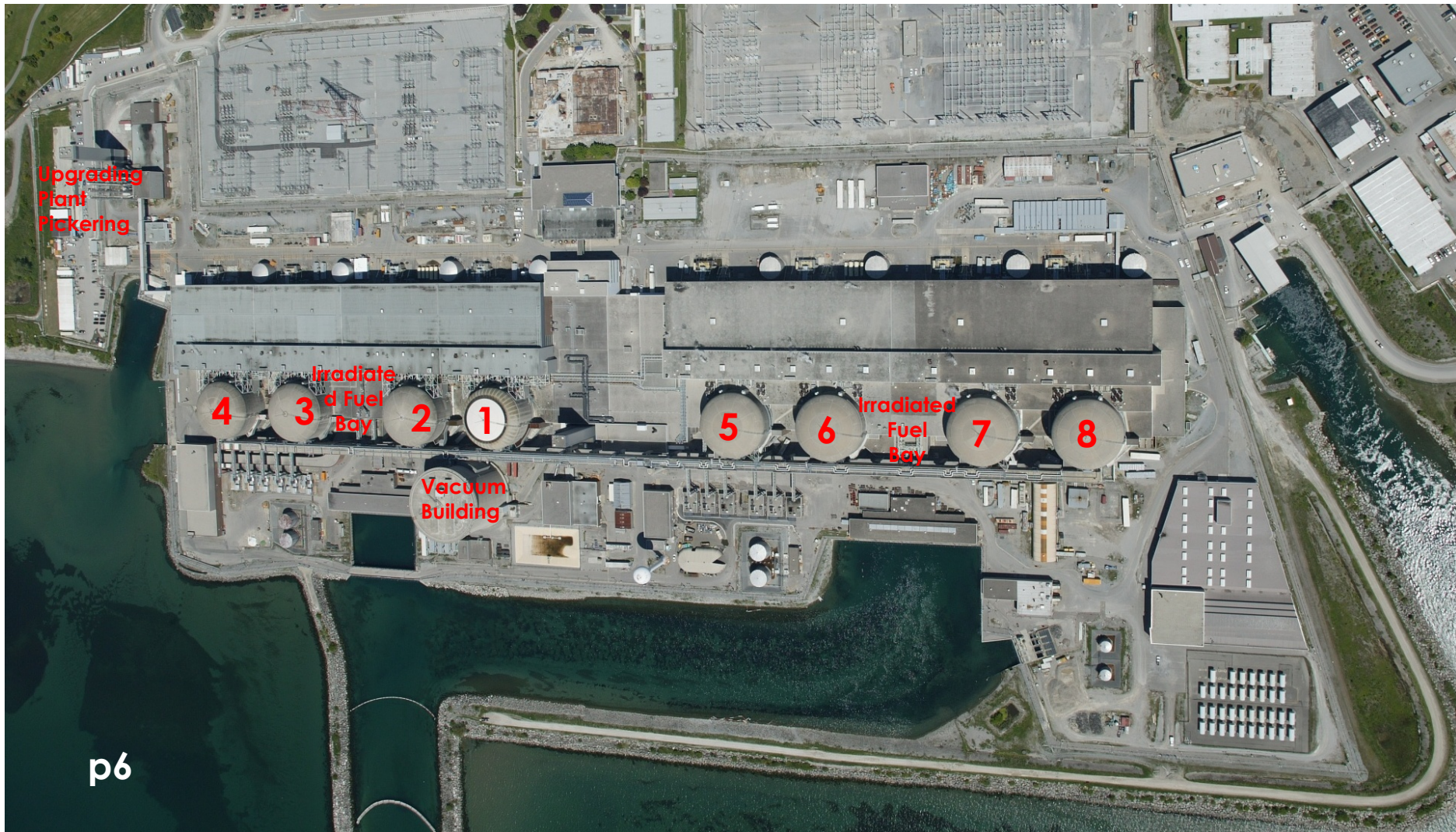
PN | Groundwater Flow Direction



Consistent with previous interpretations

PN | Groundwater Quality

Key Areas Monitored



PN | Groundwater Quality

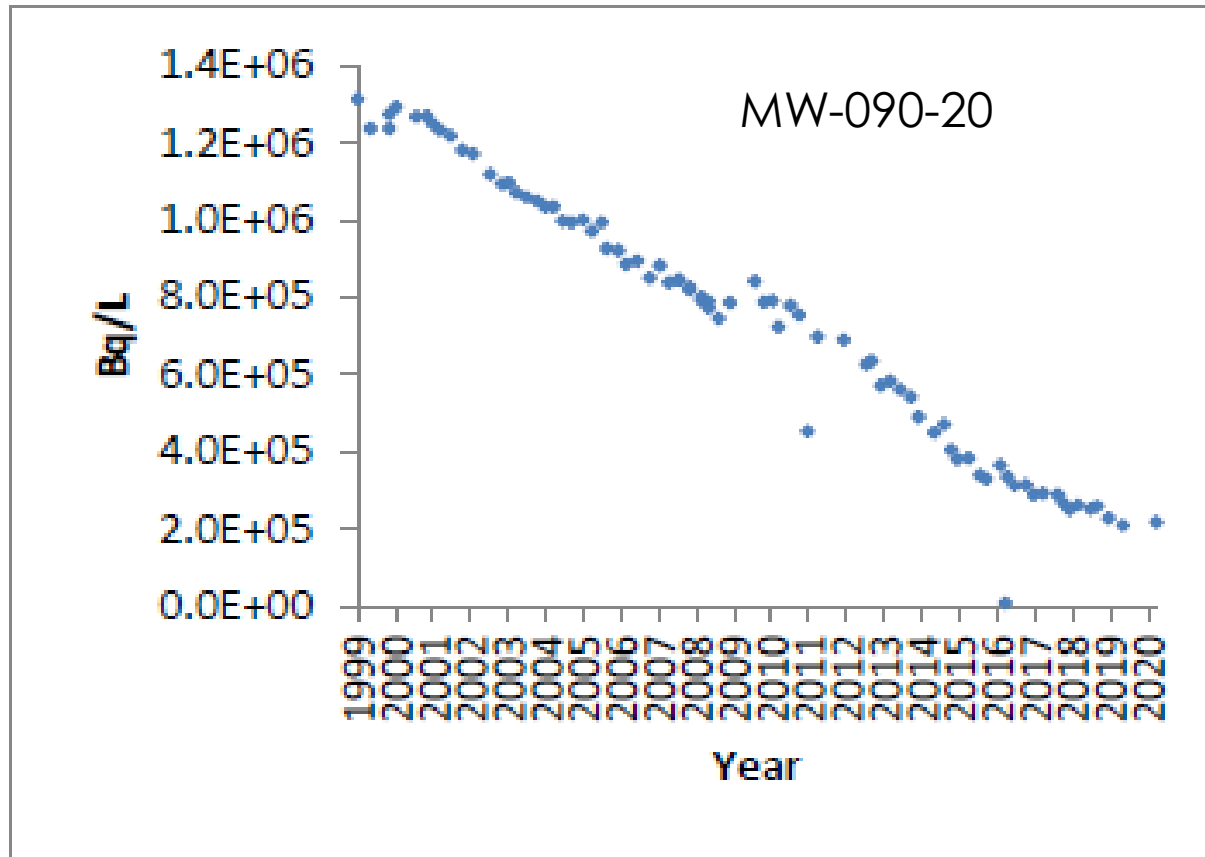
Upgrading Plant Pickering Area

Upgrading
Plant
Pickering



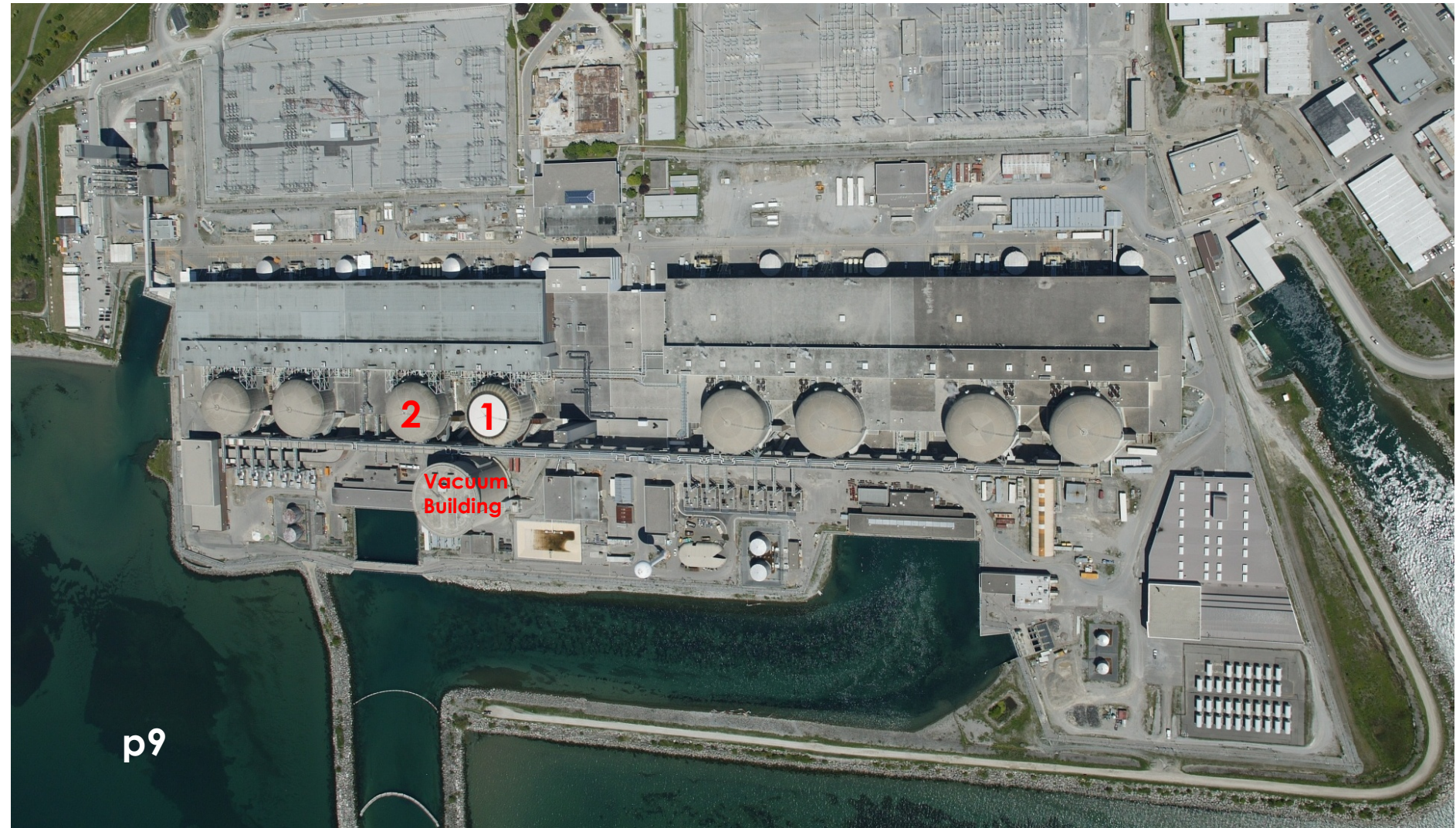
PN | Groundwater Quality

Upgrading Plant Pickering Area



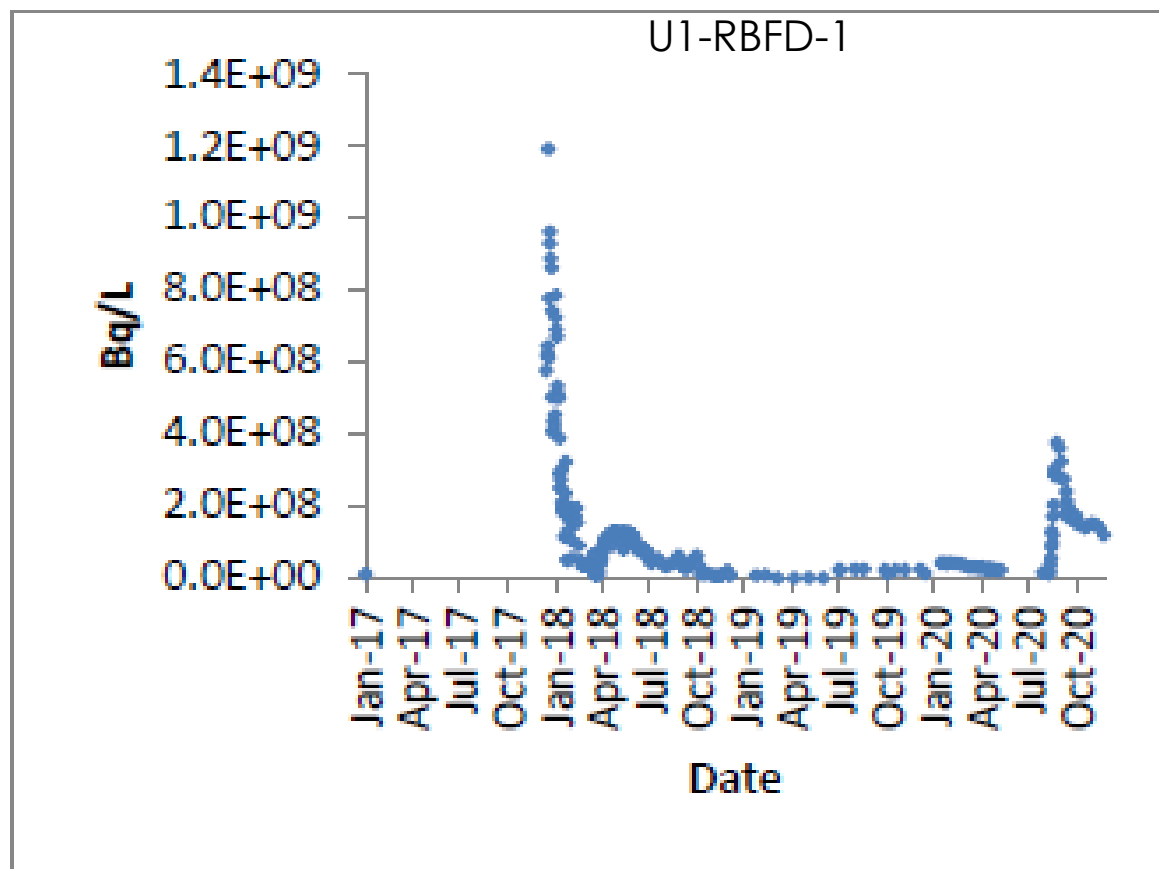
PN | Groundwater Quality

Unit 1, Unit 2, and Vacuum Building Areas



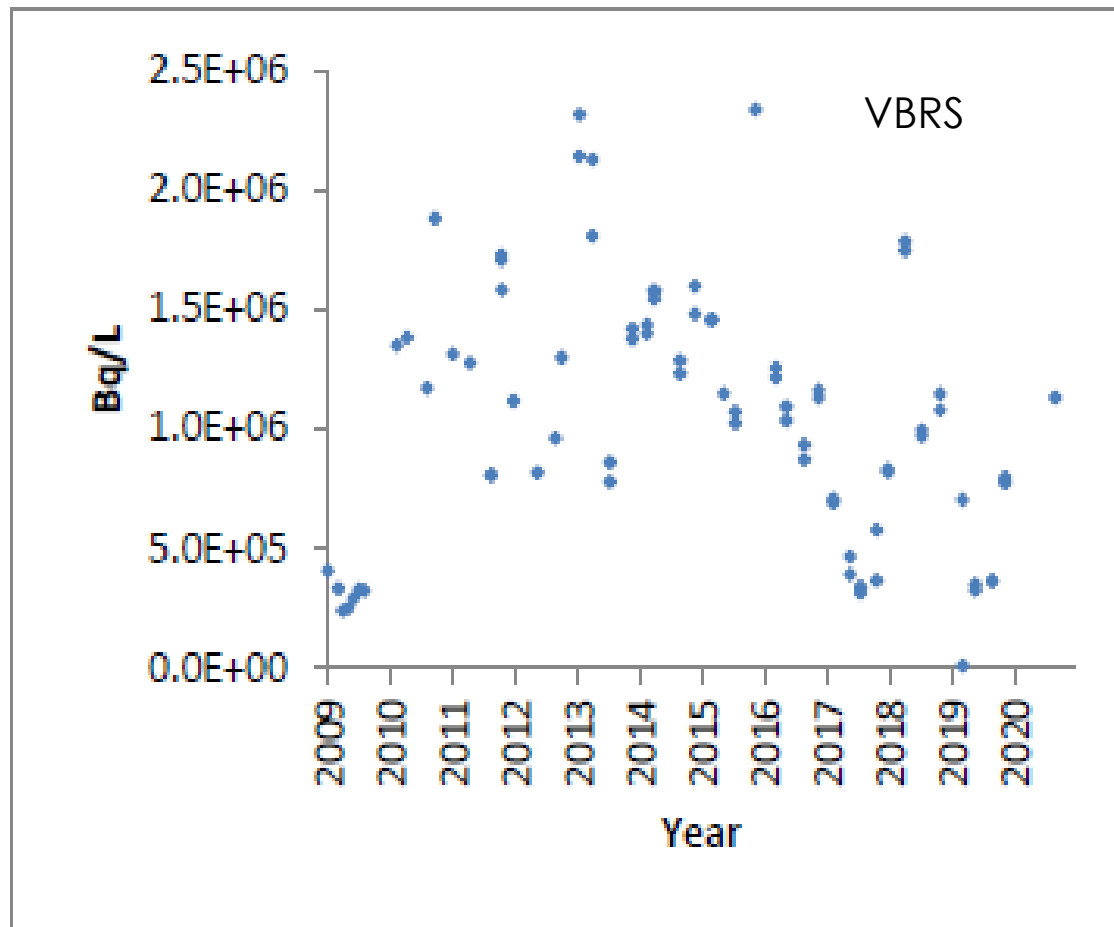
PN | Groundwater Quality

Unit 1, Unit 2, and Vacuum Building Areas



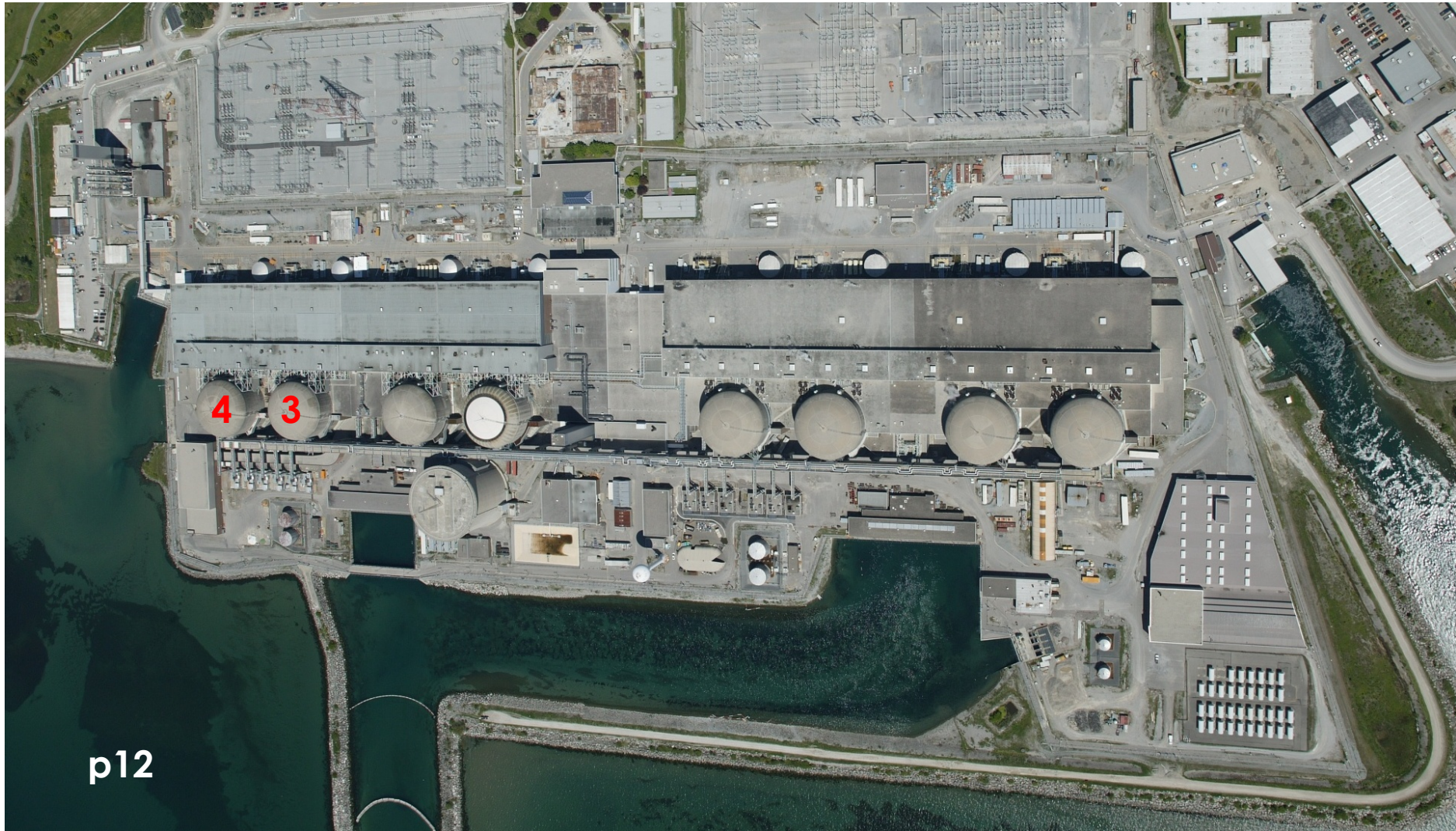
PN | Groundwater Quality

Unit 1, Unit 2, and Vacuum Building Areas



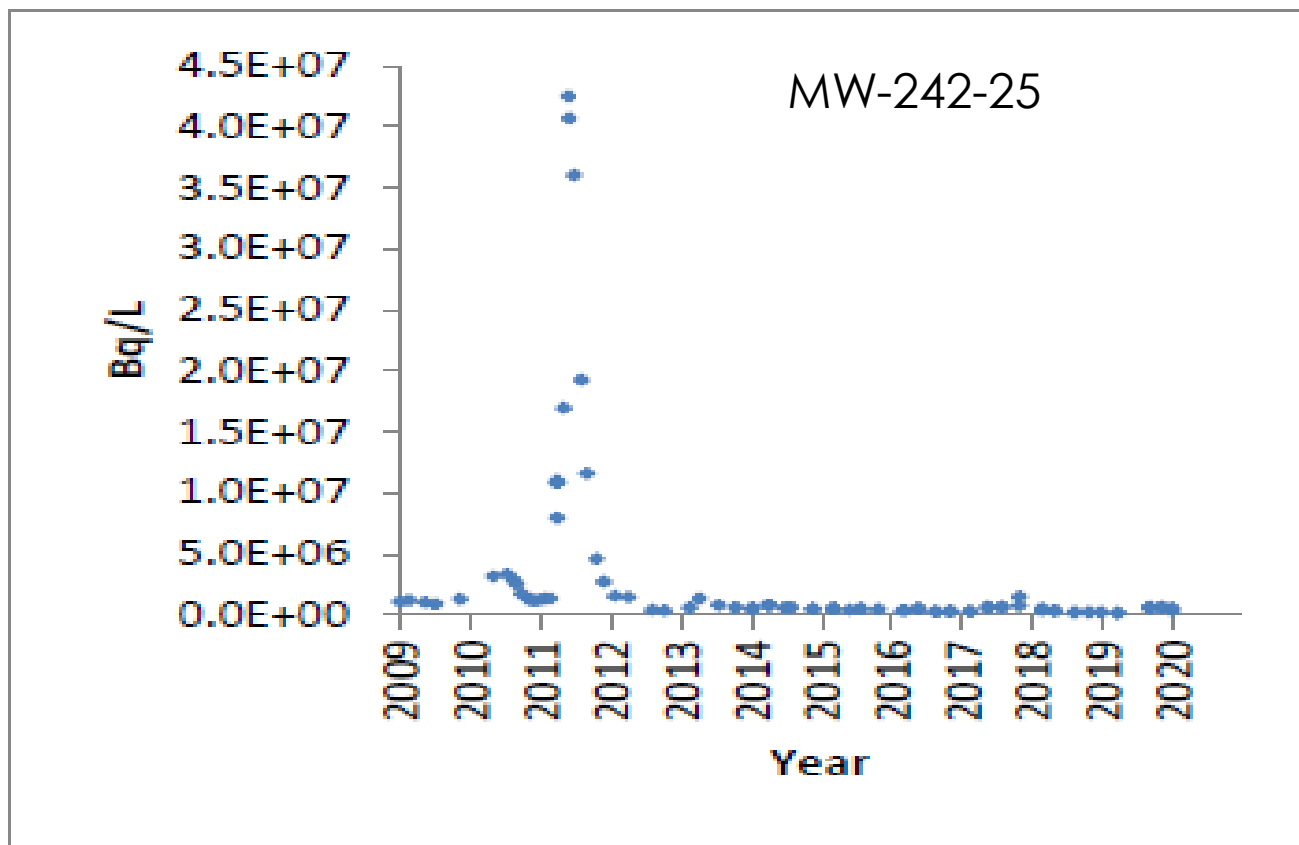
PN | Groundwater Quality

Unit 3 and Unit 4 Areas



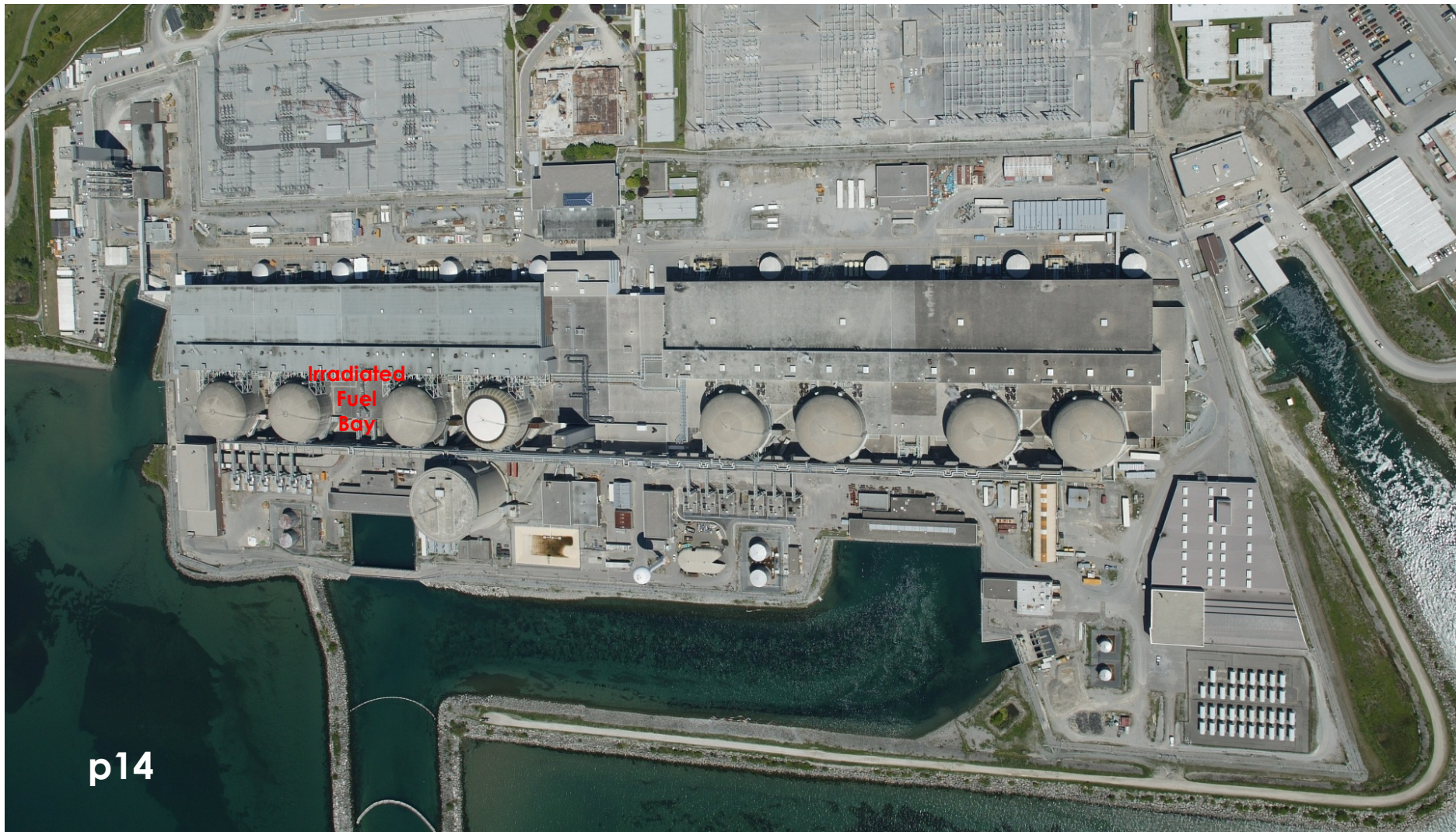
PN | Groundwater Quality

Unit 3 and Unit 4 Areas



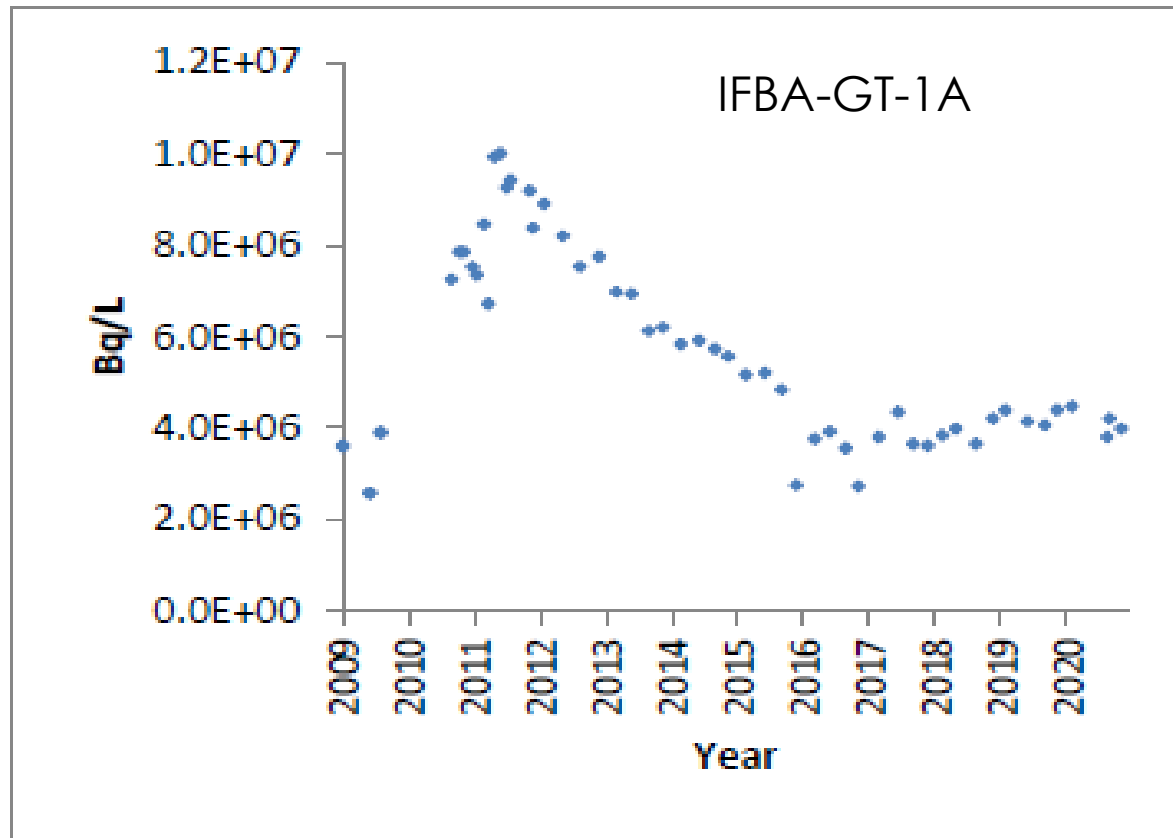
PN | Groundwater Quality

Unit 1 – 4 Irradiated Fuel Bay Area



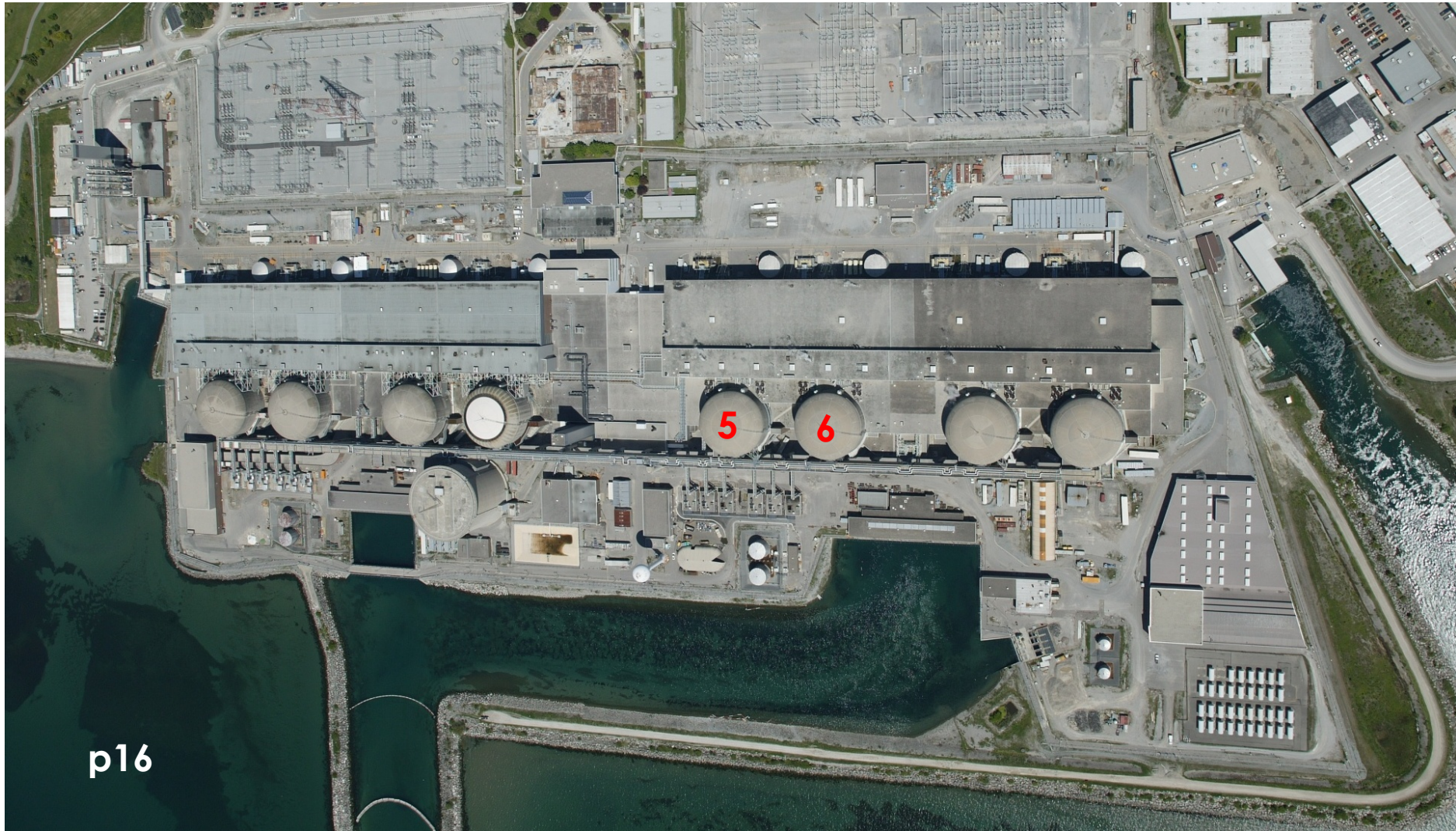
PN | Groundwater Quality

Unit 1 – 4 Irradiated Fuel Bay Area



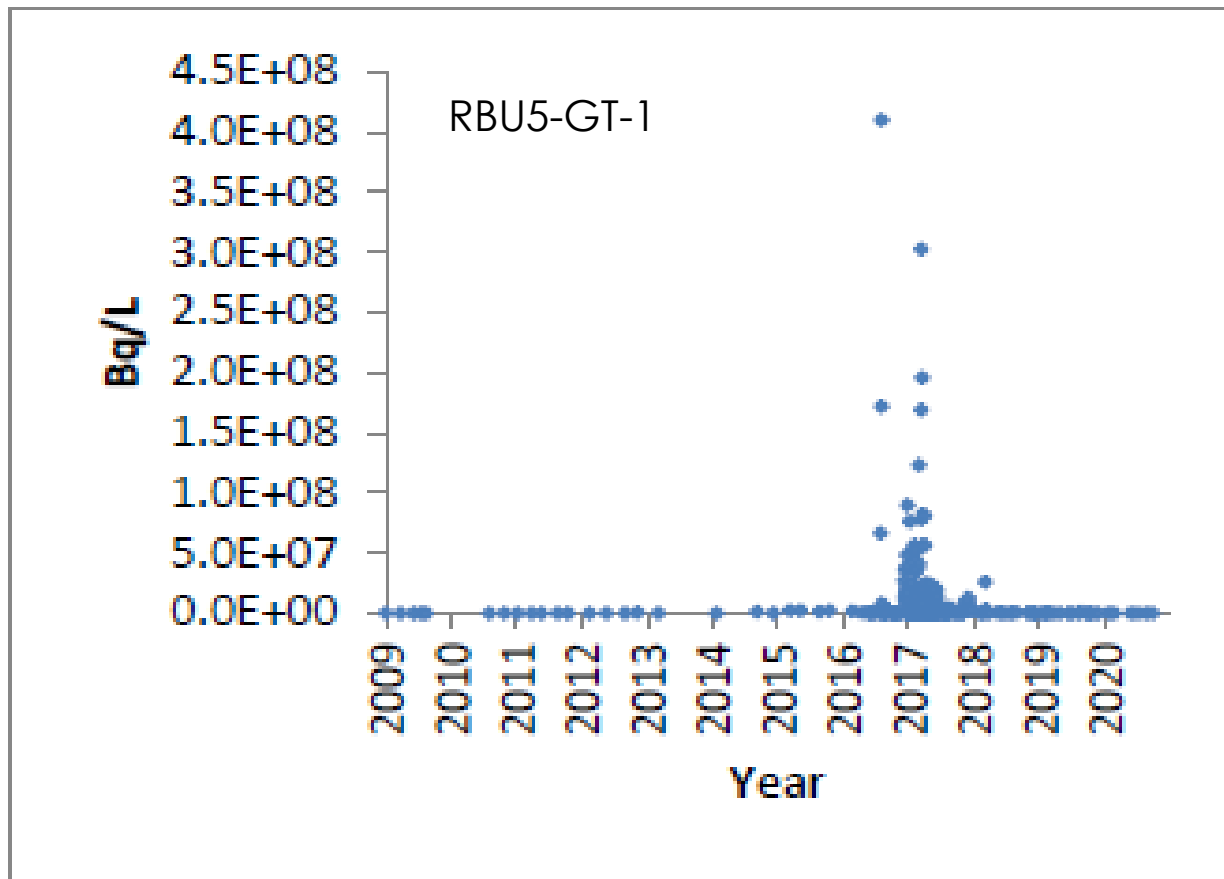
PN | Groundwater Quality

Unit 5 and Unit 6 Areas



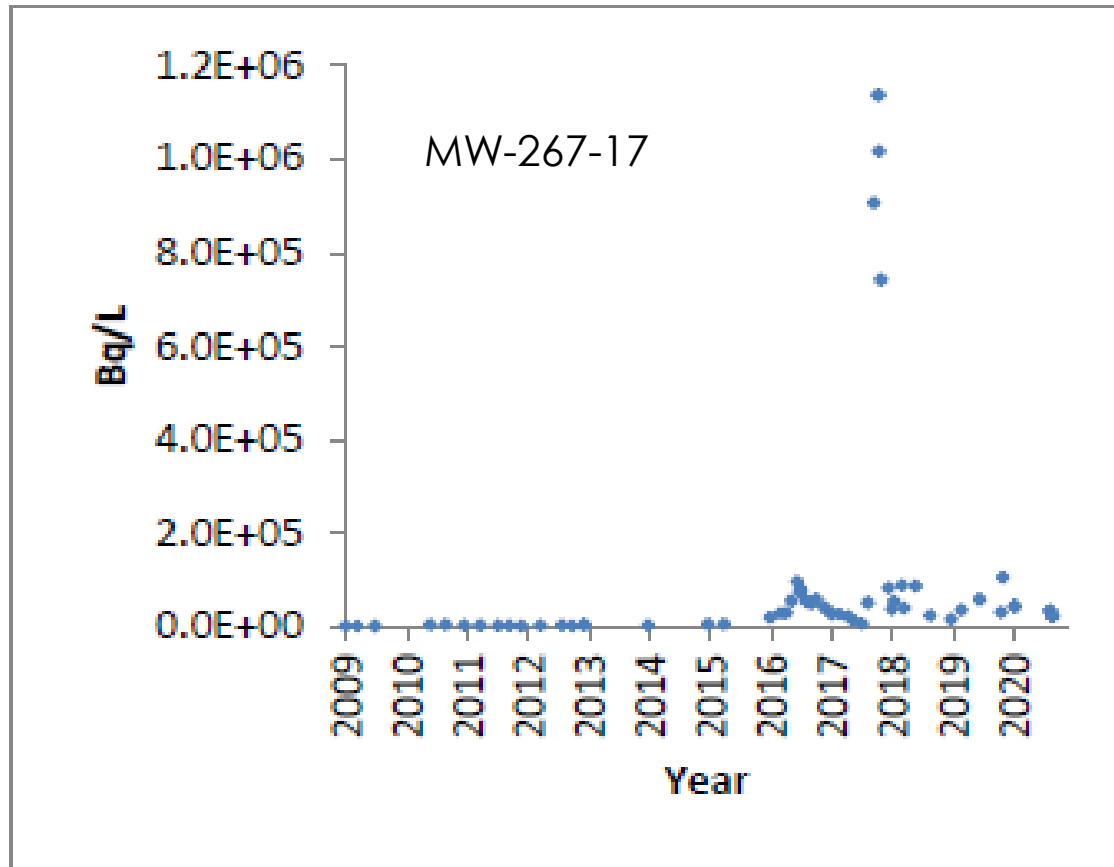
PN | Groundwater Quality

Unit 5 and Unit 6 Areas



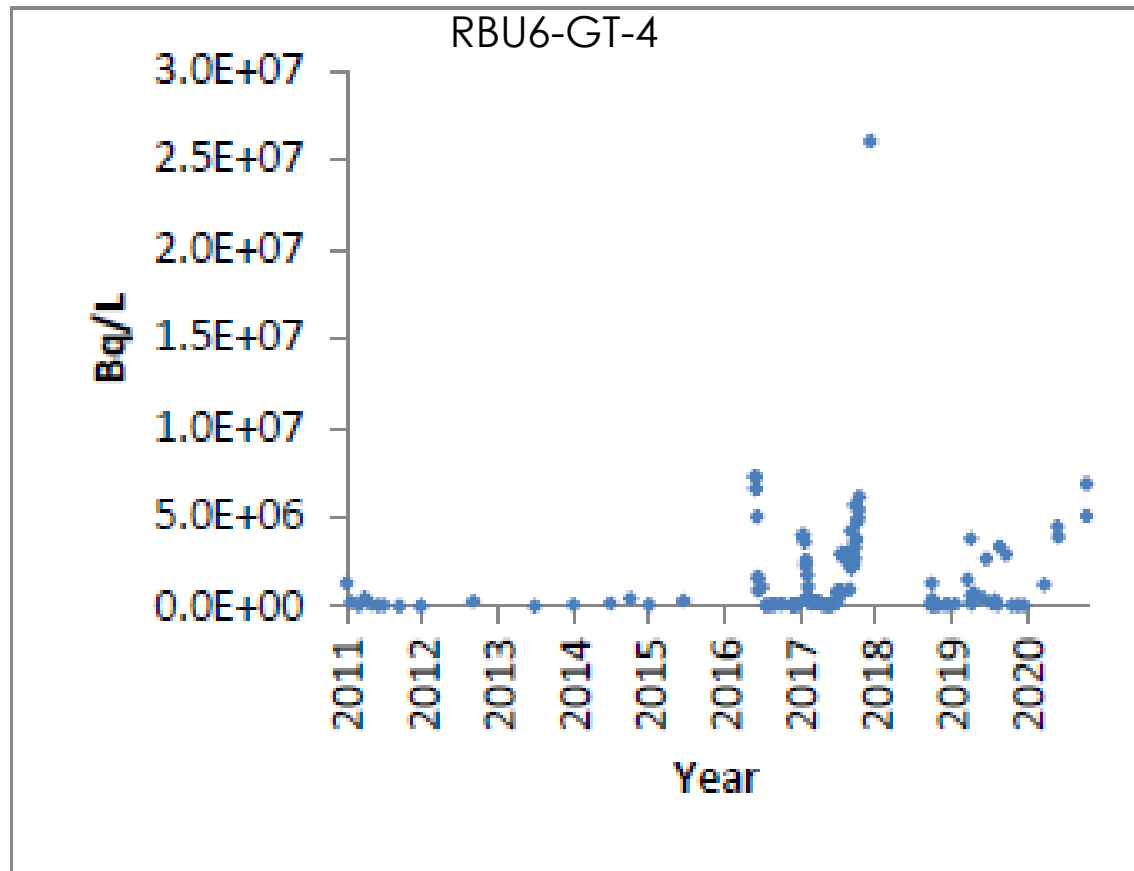
PN | Groundwater Quality

Unit 5 and Unit 6 Areas



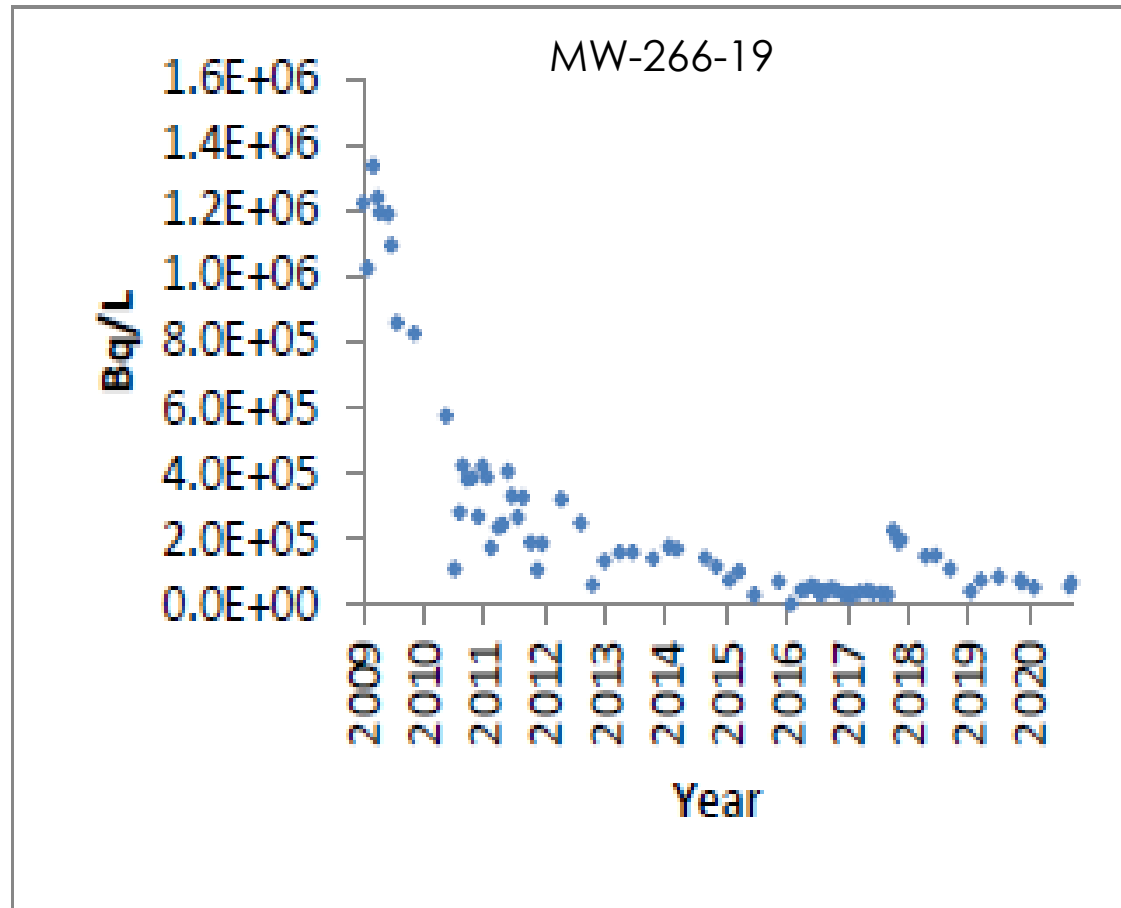
PN | Groundwater Quality

Unit 5 and Unit 6 Areas



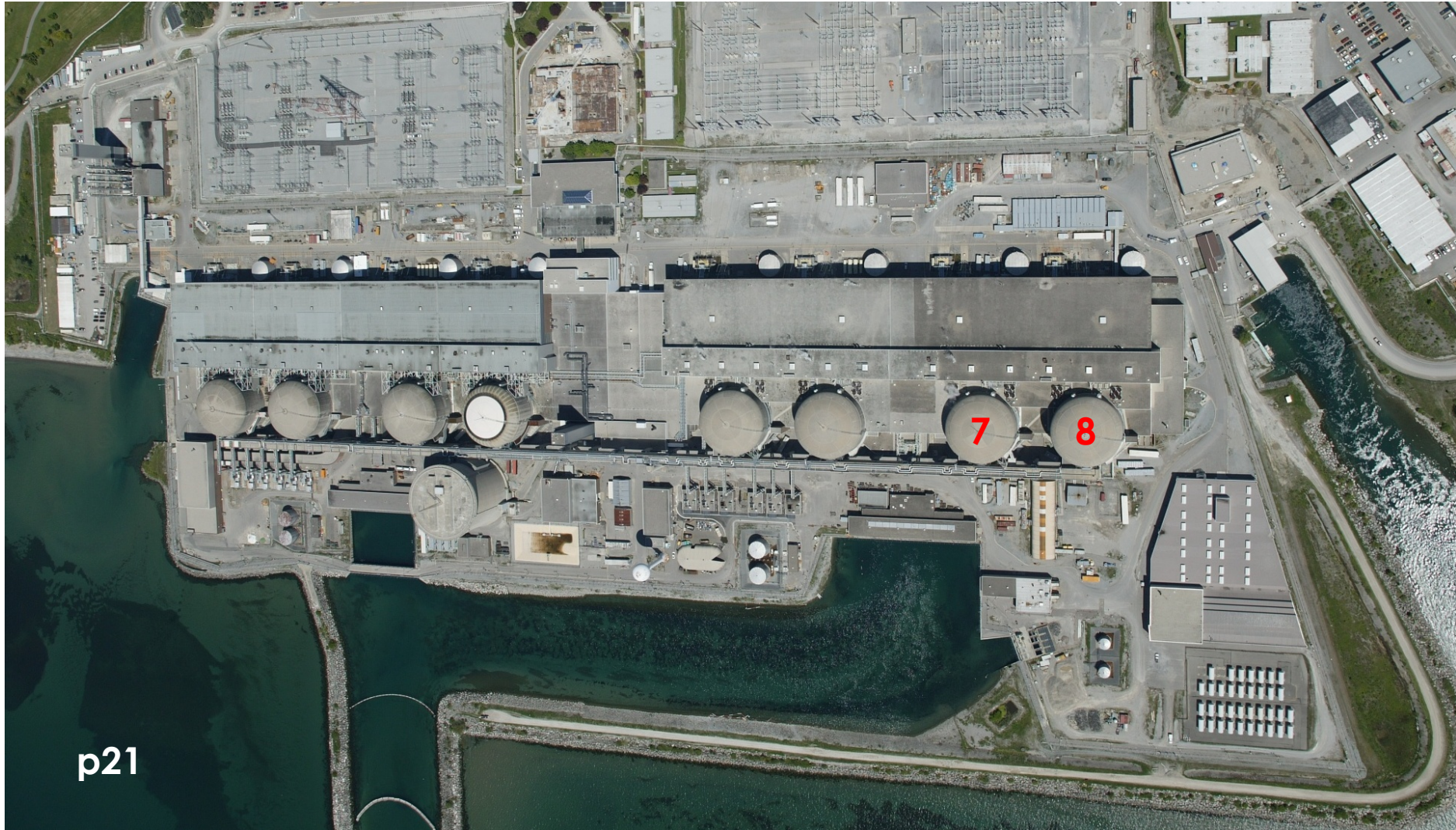
PN | Groundwater Quality

Unit 5 and Unit 6 Areas



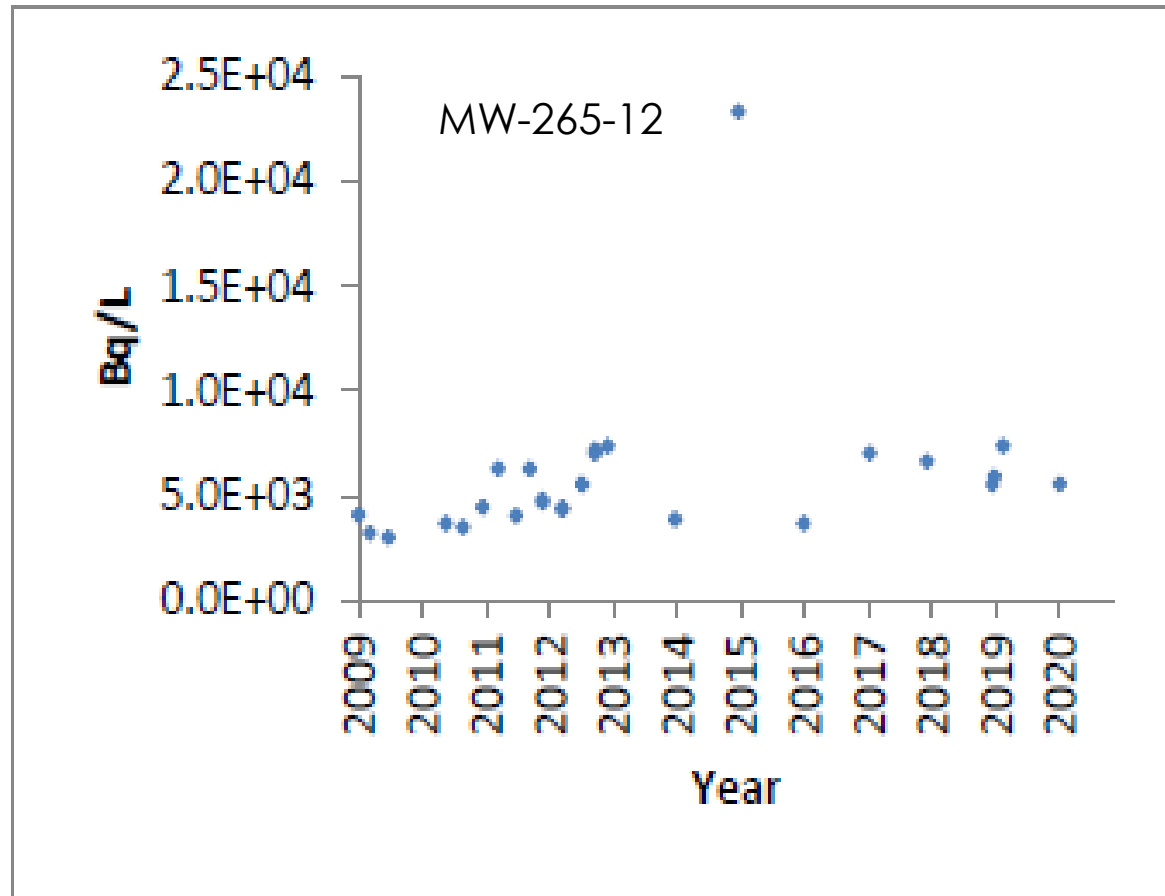
PN | Groundwater Quality

Unit 7 and Unit 8 Areas



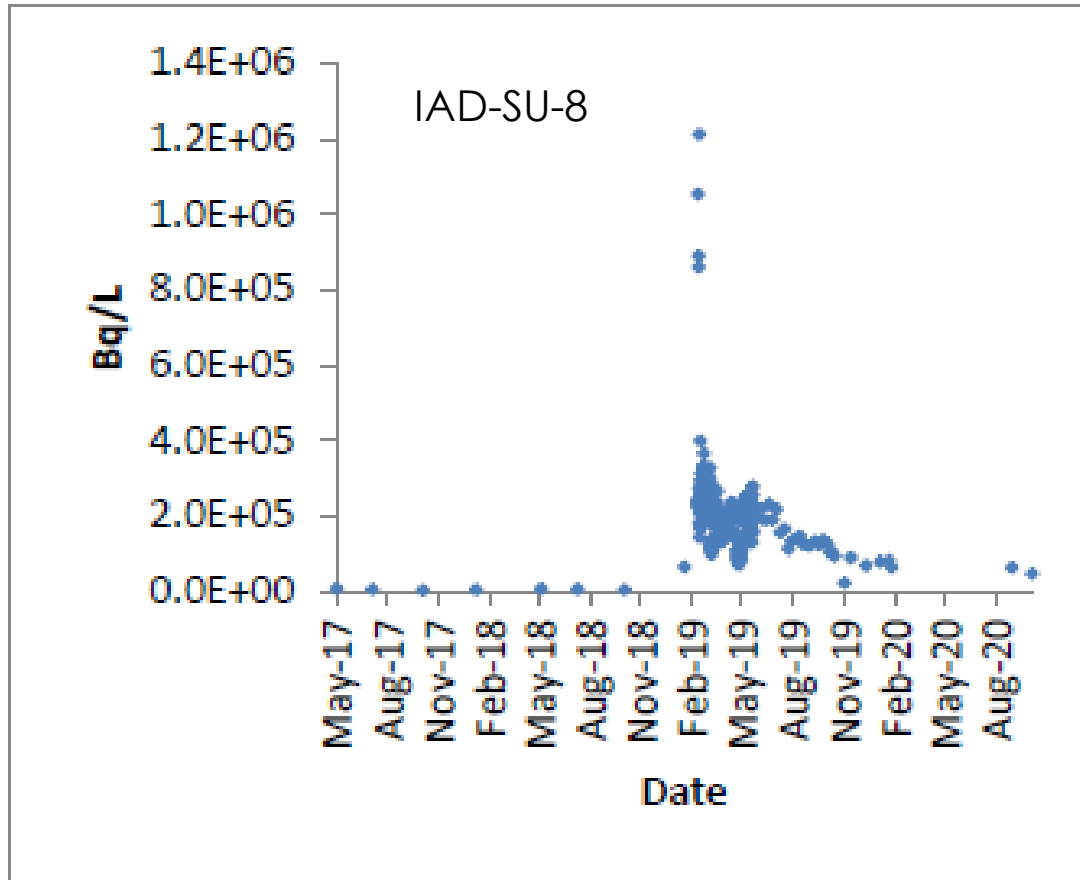
PN | Groundwater Quality

Unit 7 and Unit 8 Areas



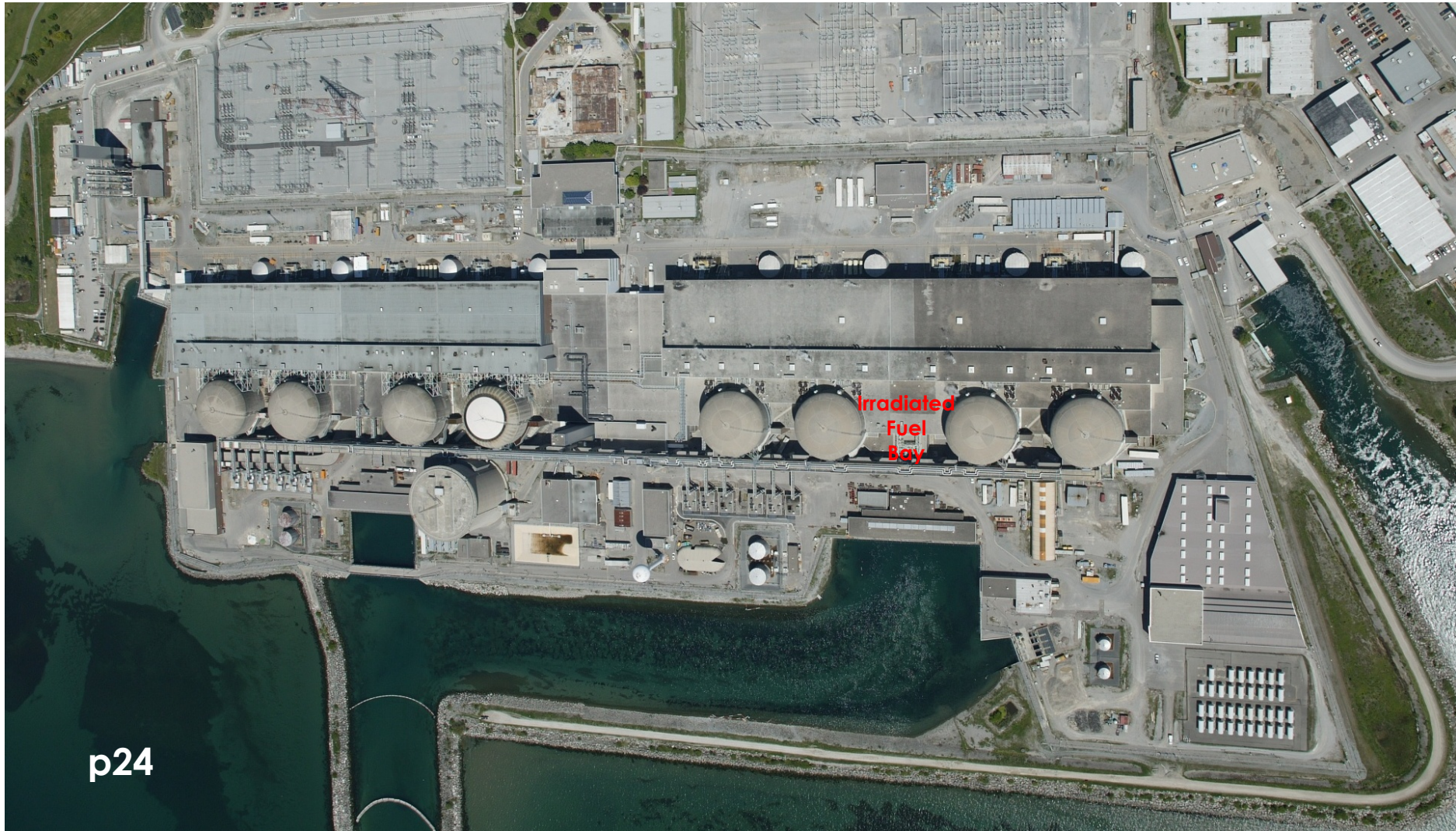
PN | Groundwater Quality

Unit 7 and Unit 8 Areas



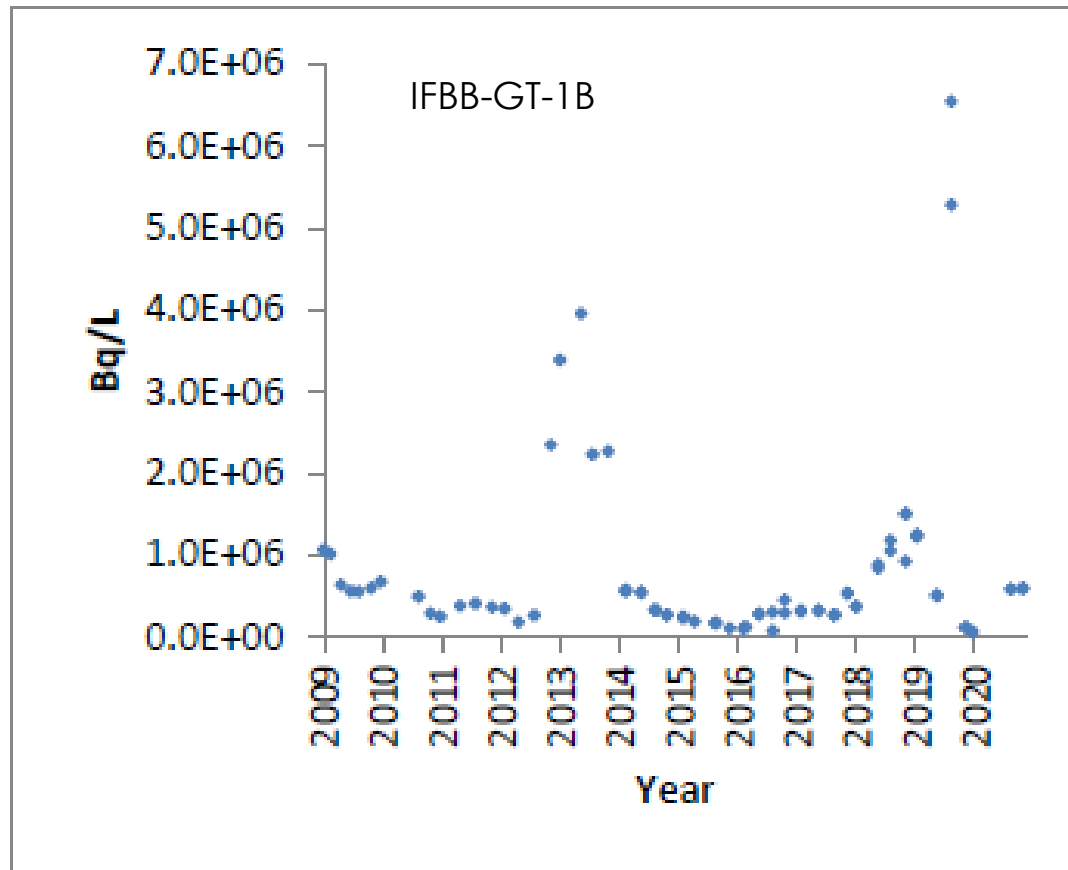
PN | Groundwater Quality

Unit 5 – 8 Irradiated Fuel Bay Area



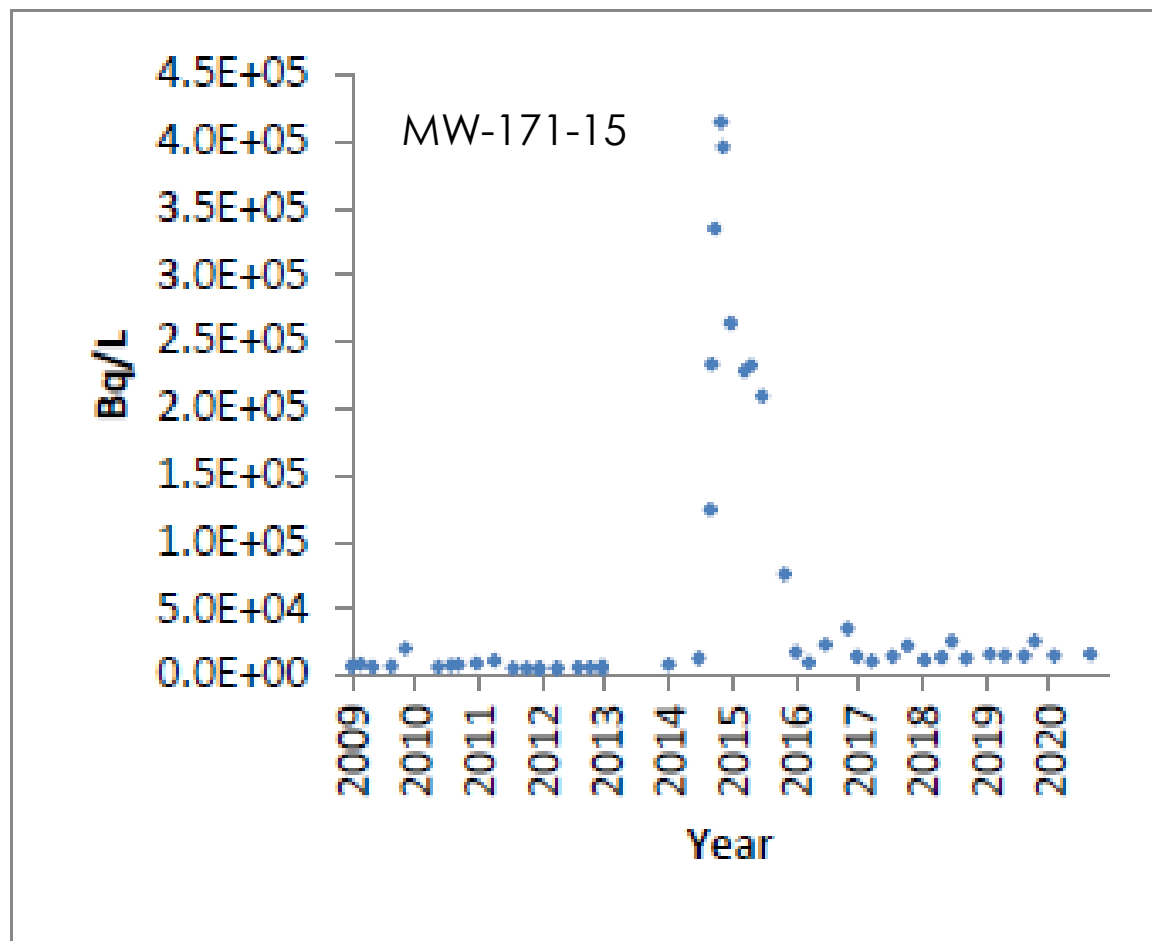
PN | Groundwater Quality

Unit 5 – 8 Irradiated Fuel Bay Area

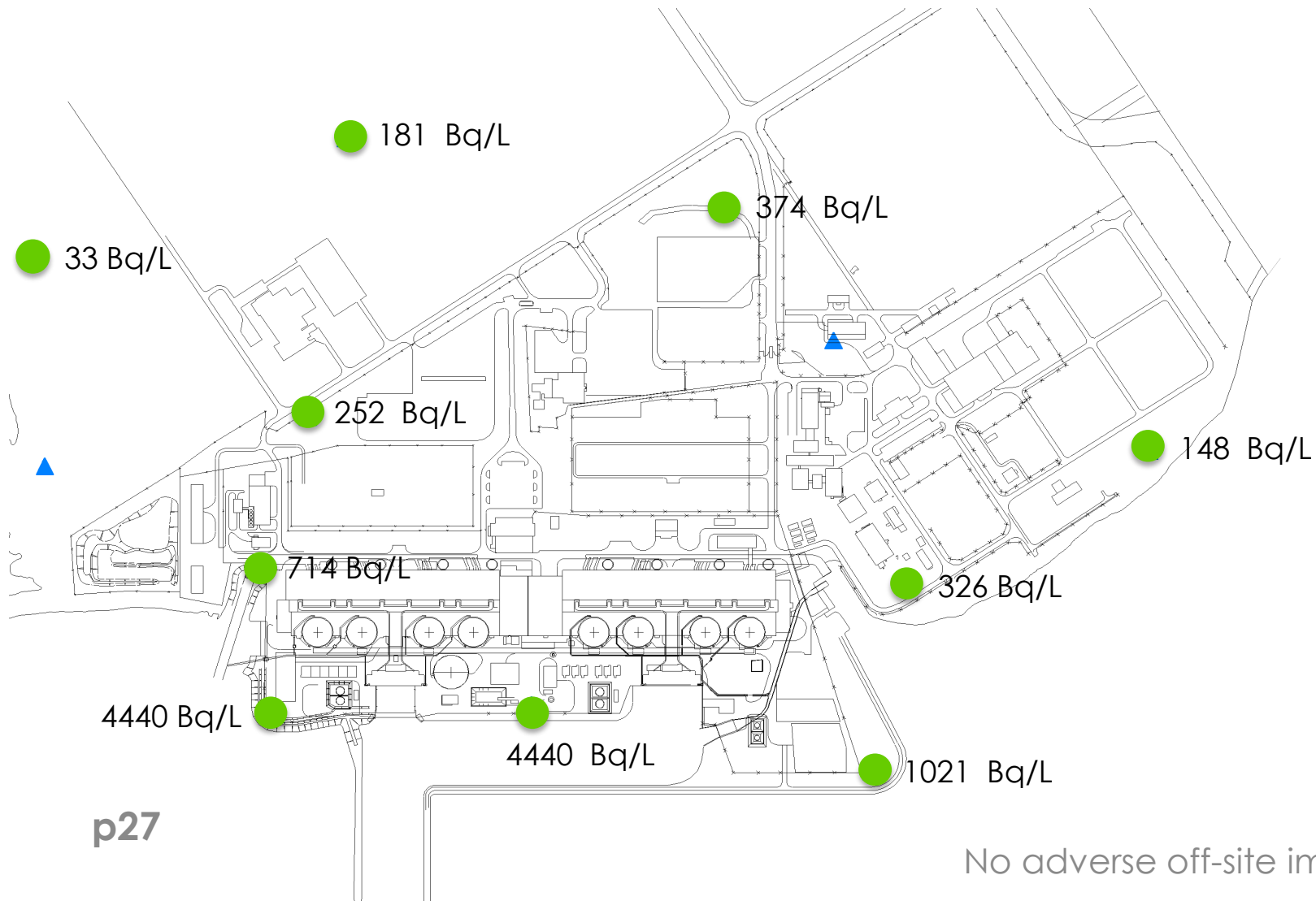


PN | Groundwater Quality

Unit 5 – 8 Irradiated Fuel Bay Area



PN | Site Boundary Groundwater Quality



Darlington Nuclear (DN)

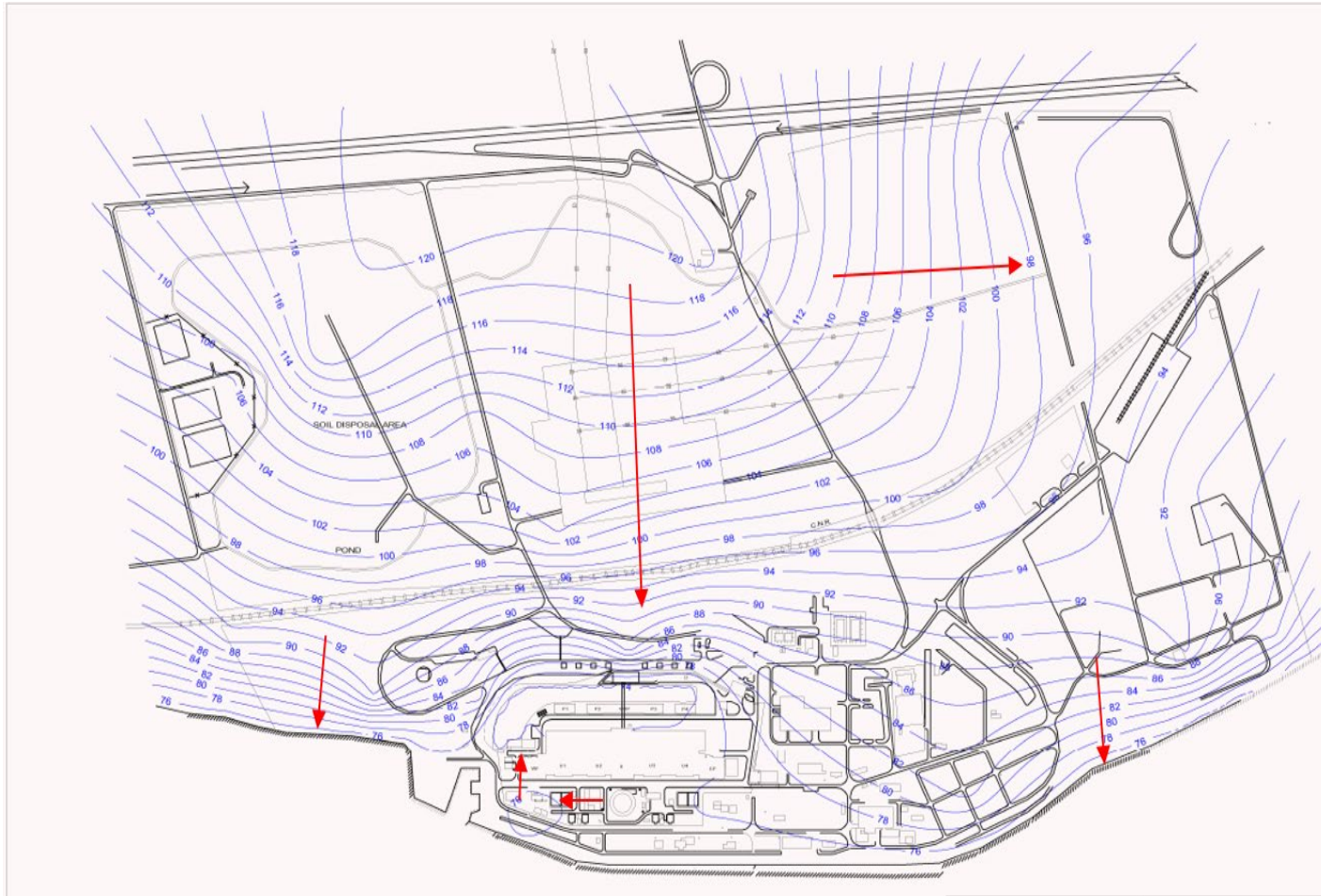
DN | Program Overview



✓ 81 sampling locations

✓ 160 samples

DN | Groundwater Flow Direction



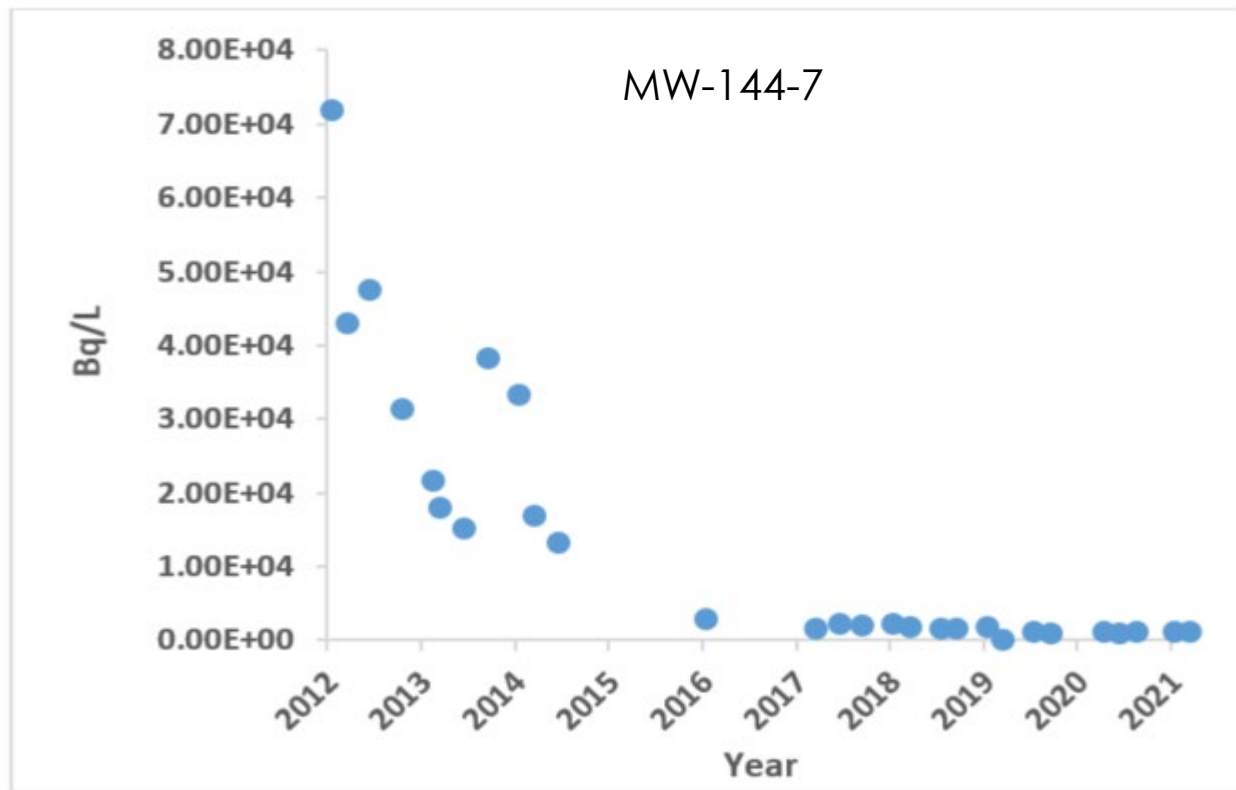
DN | Groundwater Quality

Reactor Building Area

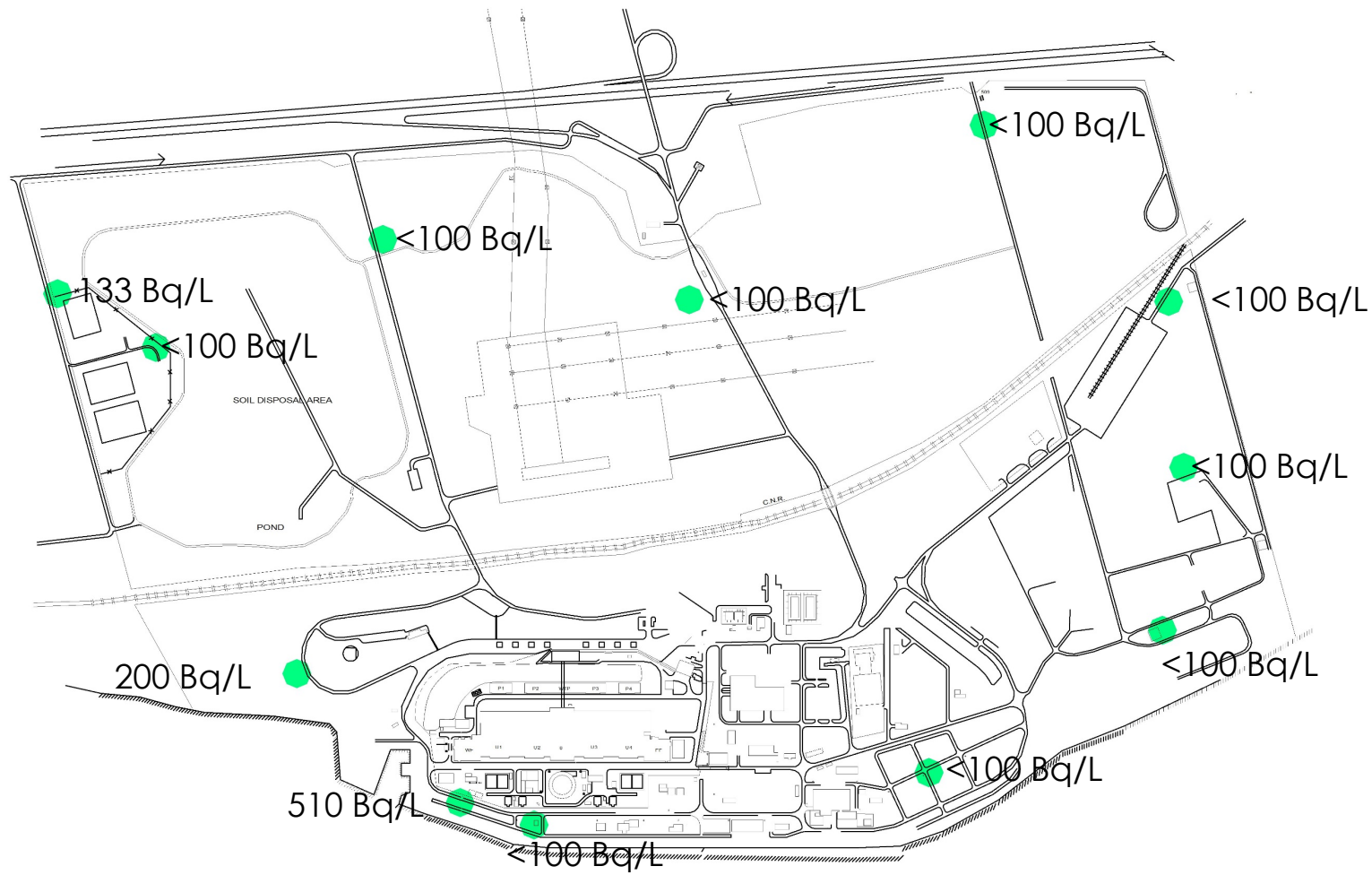


DN | Groundwater Quality

Reactor Building Area



DN | Site Boundary Groundwater Quality





2020 Summary

- For both Pickering Nuclear and Darlington Nuclear, the groundwater flow patterns remain consistent with original interpretations.
- Groundwater data collected from the key areas remained stable, which indicate consistent environmental performance.
- There were no indications of off-site impacts from PN and DN groundwater

ONTARIO **POWER** GENERATION

Copyright 2019